

# Mining LEED™ for Carbon:



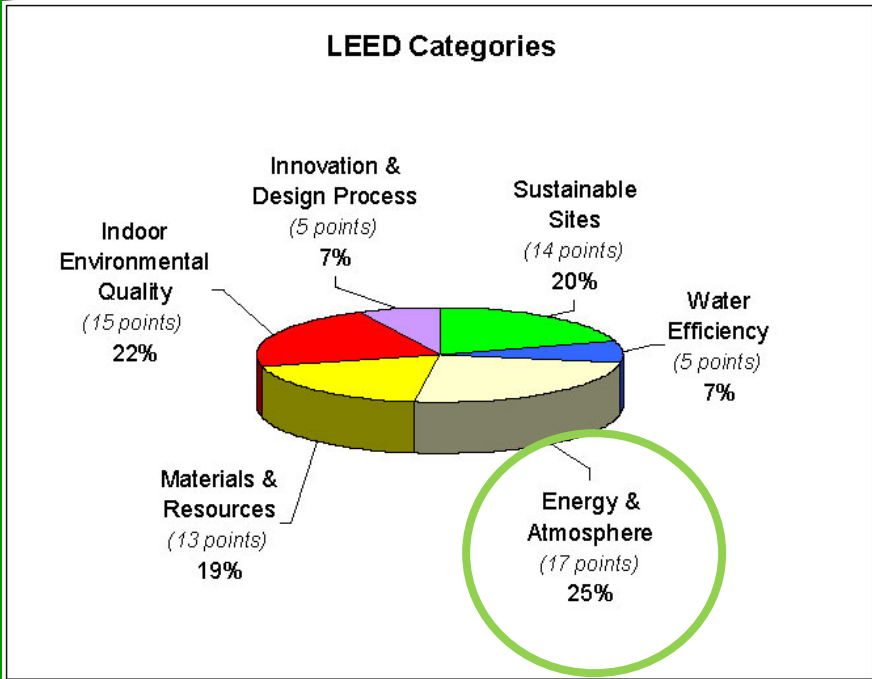
## Energy Effective Design and LEED™ Credits

We will dissect this Platinum + Carbon Neutral Building  
To see how LEED™ credits can be used as a  
spring point to elevate to Carbon Neutral

# Comparing Carbon Neutral to LEED™

- LEED™ is a *holistic assessment tool* that looks at the overall sustainable nature of buildings within a prescribed rating system *to provide a basis for comparison* – with the hopes of changing the market
- Projects are ranked from Certified to Platinum on the basis of credits achieved in the areas of Sustainable Sites, Energy Efficiency, Materials and Resources, Water Efficiency, Indoor Environmental Quality and Innovation in Design Process
- **LEED™ does not assess the Carbon value of a building, its materials, use of energy or operation**
- **Most LEED Gold and Platinum buildings earn a maximum of 5/17 of the Energy and Atmosphere Credits!**





- Only 25% of the LEED credits are devoted to energy.
- Of those, 10/70 are for optimization.
- Maximum reduction is 60%.
- **Most LEED buildings earn less than 5 of these credits.....**

And the first aim of Carbon Neutral Design is to achieve 100% reduction...

10		Energy & Atmosphere	Possible Points:	17
Y	Prereq 1	Fundamental Building Systems Commissioning		
Y	Prereq 2	Minimum Energy Performance		
Y	Prereq 3	CFC Reduction in HVAC & R Equipment		
2	Credit 1.1	Optimize Energy Performance, 20% New / 10% Existing		
2	Credit 1.2	Optimize Energy Performance, 30% New / 20% Existing		
2	Credit 1.3	Optimize Energy Performance, 40% New / 30% Existing		
2	Credit 1.4	Optimize Energy Performance, 50% New / 40% Existing		
1	Credit 1.5	Optimize Energy Performance, 60% New / 50% Existing		
	Credit 2.1	Renewable Energy, 5% Contribution		
	Credit 2.2	Renewable Energy, 10% Contribution		
	Credit 2.3	Renewable Energy, 20% Contribution		
1	Credit 3	Additional Commissioning		
	Credit 4	Elimination of HCFCs and Halons		
	Credit 5	Measurement & Verification		
	Credit 6	Green Power		

Scorecard for National Works Yard in Vancouver, LEED™ Gold

# 2030 Targets - Commercial



## 2030 CHALLENGE Targets: National Averages



### U.S. Average Site Energy Use and 2030 Challenge Energy Reduction Targets by Space/Building Type (CBECS 2003)<sup>1</sup>

From the Environmental Protection Agency (EPA): Use this chart to find the site fossil-fuel energy targets.

Primary Space/Building Type <sup>2</sup>	Available in Target Finder <sup>3</sup>	Average Source EUI <sup>4</sup> (kBtu/Sq.Ft./Yr)	Average Percent Electric	Average Site EUI <sup>4</sup> (kBtu/Sq.Ft./Yr)	2030 Challenge Site EUI Targets (kBtu/Sq.Ft./Yr)				
					50% Target	60% Target	70% Target	80% Target	90% Target
Administrative/Professional & Government Office	✓								
Bank	✓								
Clinic/other outpatient health		219	76%	84.2	42.1	33.7	25.3	16.8	8.4
College/university (campus-level)		280	63%	120	60	48	36	24	12
Convenience store (with or without gas station)		753	90%	241.4	120.7	96.6	72.4	48.3	24.1
Distribution/shipping center		90	61%	44.2	22.1	17.7	13.3	8.8	4.4
Fast food		1306	64%	534.3	267.2	213.7	160.3	106.9	53.4
Fire station/police station		157	56%	77.9	39.0	31.2	23.4	15.6	7.8
Hospital/inpatient health	✓								
Hotel, Motel or inn	✓								
K-12 School	✓								
Medical Office	✓								

#### Reduction over MNECB kBtu/sf/yr

123	5%
109	10%
96	15%
82	20%
68	25%
61	30%
54	35%
48	40%
41	45%
34	50%

Target Finder is an online tool:

[http://www.energystar.gov/index.cfm?c=new\\_bldg\\_design.bus\\_t arget\\_finder](http://www.energystar.gov/index.cfm?c=new_bldg_design.bus_t arget_finder)

# LEED™ 2009 and Operating Energy

## OPTIMIZE ENERGY PERFORMANCE

	NC	CS
Credit	EA Credit 1	EA Credit 1
Points	1-19 points	3-21 points

EA	
NC	Credit 1
CS	Credit 1

### INTENT

To achieve increasing levels of energy performance beyond the prerequisite standard to reduce environmental and economic impacts associated with excessive energy use.

### REQUIREMENTS: NC & CS

Select 1 of the 3 compliance path options described below. Project teams documenting achievement using any of the 3 options are assumed to be in compliance with EA Prerequisite 2: Minimum Energy Performance

### OPTION 1. WHOLE BUILDING ENERGY SIMULATION (1-19 points for NC, 3-21 points for CS)

#### EITHER

#### **PATH 1. Model National Energy Code For Buildings (MNECB)**

Demonstrate a percentage cost improvement in the proposed building performance rating compared with the reference building performance rating. Calculate the reference building performance according to the Model National Energy Code for Buildings 1997 (MNECB) using a computer simulation model for the whole building project. The minimum energy cost savings percentage for each point threshold is as follows:

# LEED™ 2009 and Operating Energy: Path 1 Model National Energy Code for Buildings

NEW BUILDINGS	EXISTING BUILDING RENOVATIONS	POINTS FOR NC	POINTS FOR CS
25%	21%	1	3
27%	23%	2	4
28%	25%	3	5
30%	27%	4	6
32%	28%	5	7
33%	30%	6	8
35%	32%	7	9
37%	33%	8	10
39%	35%	9	11
40%	37%	10	12
42%	39%	11	13
44%	40%	12	14
45%	42%	13	15
47%	44%	14	16
49%	45%	15	17
50%	47%	16	18
52%	49%	17	19
54%	50%	18	20
56%	52%	19	21

## Reduction over MNECB kBtu/sf/yr

123	5%
109	10%
96	15%
82	20%
68	25%
61	30%
54	35%
48	40%
41	45%
34	<b>50%</b>

The energy analysis done for the building performance rating method must include all the energy costs associated with the building project. To achieve points under this credit, the proposed design must meet the following criteria:

- Compliance with the mandatory provisions of the MNECB 1997.
- Inclusion of all the energy costs within and associated with the building project.
- Comparison against a baseline building that complies with the reference building requirements as defined in the MNECB 1997.

# LEED™ 2009 and Operating Energy: ASHRAE 90.1 - 2007

OR

## **PATH 2. ASHRAE 90.1-2007, Energy Standard for Buildings Except Low-Rise Residential Buildings**

Demonstrate a percentage cost improvement in the proposed building performance rating compared with the baseline building performance rating. Calculate the baseline building performance according to Appendix G of ANSI/ASHRAE/IESNA Standard 90.1-2007 (with errata but without addenda<sup>3</sup>) using a computer simulation model for the whole building project. The minimum energy cost savings percentage for each point threshold is as follows:

# LEED™ 2009 and Operating Energy: ASHRAE 90.1 - 2007

NEW BUILDINGS	EXISTING BUILDING RENOVATIONS	POINTS FOR NC	POINTS FOR CS
12%	8%	1	3
14%	10%	2	4
16%	12%	3	5
18%	14%	4	6
20%	16%	5	7
22%	18%	6	8
24%	20%	7	9
26%	22%	8	10
28%	24%	9	11
30%	26%	10	12
32%	28%	11	13
34%	30%	12	14
36%	32%	13	15
38%	34%	14	16
40%	36%	15	17
42%	38%	16	18
44%	40%	17	19
46%	42%	18	20
48%	44%	19	21



# LEED™ 2009 and Renewable Energy

## NEW CONSTRUCTION:

PERCENTAGE RENEWABLE ENERGY	POINTS
1%	1
3%	2
5%	3
7%	4
9%	5
11%	6
13%	7

## CORE AND SHELL:

PERCENTAGE RENEWABLE ENERGY	POINTS
0.5%	2
1%	4

A carbon neutral building should be able to supply 100% of operating energy with renewables avoiding the use of fossil fuels.

# Towards Zero Energy \ Zero Carbon:

LEED™ Gold



IslandWood

Early ZED



BEDZed

case studies

Jubilee Wharf



ZED

Aldo Leopold Legacy Center



Carbon Neutral

# IslandWood – Mithun Architects and Planners

IslandWood is an education center, on Bainbridge Island near Seattle, Washington. It was awarded LEED™ Gold Certification in 2002.

## **Team members**

(too numerous to fully list):

Mithun Architects

KEEN Engineering  
(Stantec)

Berger Partnership  
Landscape

Western Sun

2020 Engineering

Browne  
Engineering



# IslandWood – Using the LEED™ System

A high LEED™ rating can be used as the basis for considering extending performance to Zero Carbon.

**Need also to go “back to the basics” of:**

- ✓ Orientation
- ✓ Climate
- ✓ Passive solar design
- ✓ Passive cooling
- ✓ Daylighting
- ✓ Low impact materials: low embodied energy, reclaimed, recycled
- ✓ Minimization of site impact
- ✓ Maximizing energy efficiency of envelope and building
- ✓ Reduction of electricity usage
- ✓ Minimizing need for additional fuel – maximizing on site renewables



# IslandWood – Sustainable Sites

(9/14 possible points)

SS Prerequisite 1, Erosion & Sedimentation Control  
SS Credit 1, Site Selection

Inference of reduced carbon emissions from personal transportation

SS Credit 4.1, Alternative Transportation, Public Transportation Access  
SS Credit 4.2, Alternative Transportation, Bicycle Storage & Changing Rooms

People, "Use" + Transportation

SS Credit 4.4, Alternative Transportation, Parking Capacity

SS Credit 5.1, Reduced Site Disturbance, Protect or Restore Open Space  
SS Credit 5.2, Reduced Site Disturbance, Development Footprint

SS Credit 6.2, Stormwater Management, Treatment

SS Credit 7.1, Landscape & Exterior Design to Reduce Heat Islands, Non-Roof

SS Credit 8, Light Pollution Reduction

Inference of reduced carbon emissions from site disturbance and possible sequestration potential from restoration of green elements

Landscape + Site

# IslandWood – Sustainable Sites (9/14 possible points)

Overview map of the development showing topography and building clustering to ensure the minimum disruption and impact on the land.





# IslandWood – Sustainable Sites (9/14 possible points)

- Wetland was protected
- Building done on most degraded part of site
- Buildings were clustered to 3% of the site
- Parking was limited
- Pathways mostly pervious
- Landscape was considered to promote indigenous species



# IslandWood – Energy and Atmosphere

(4/17 possible points)

EA Prerequisite 1, Fundamental Building Systems Commissioning

EA Prerequisite 2, Minimum Energy Performance

EA Prerequisite 3, CFC Reduction in HVAC&R Equipment

EA Credit 1.1a, Optimize Energy Performance, 15% New 5% Existing

EA Credit 1.1b, Optimize Energy Performance, 20% New 10% Existing

EA Credit 1.2a, Optimize Energy Performance, **25% New** 15% Existing

EA Credit 4, Ozone Depletion

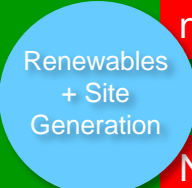


Although there is PV on the building, it is not enough to earn any of these credits, so obviously not enough to satisfy a carbon neutral state

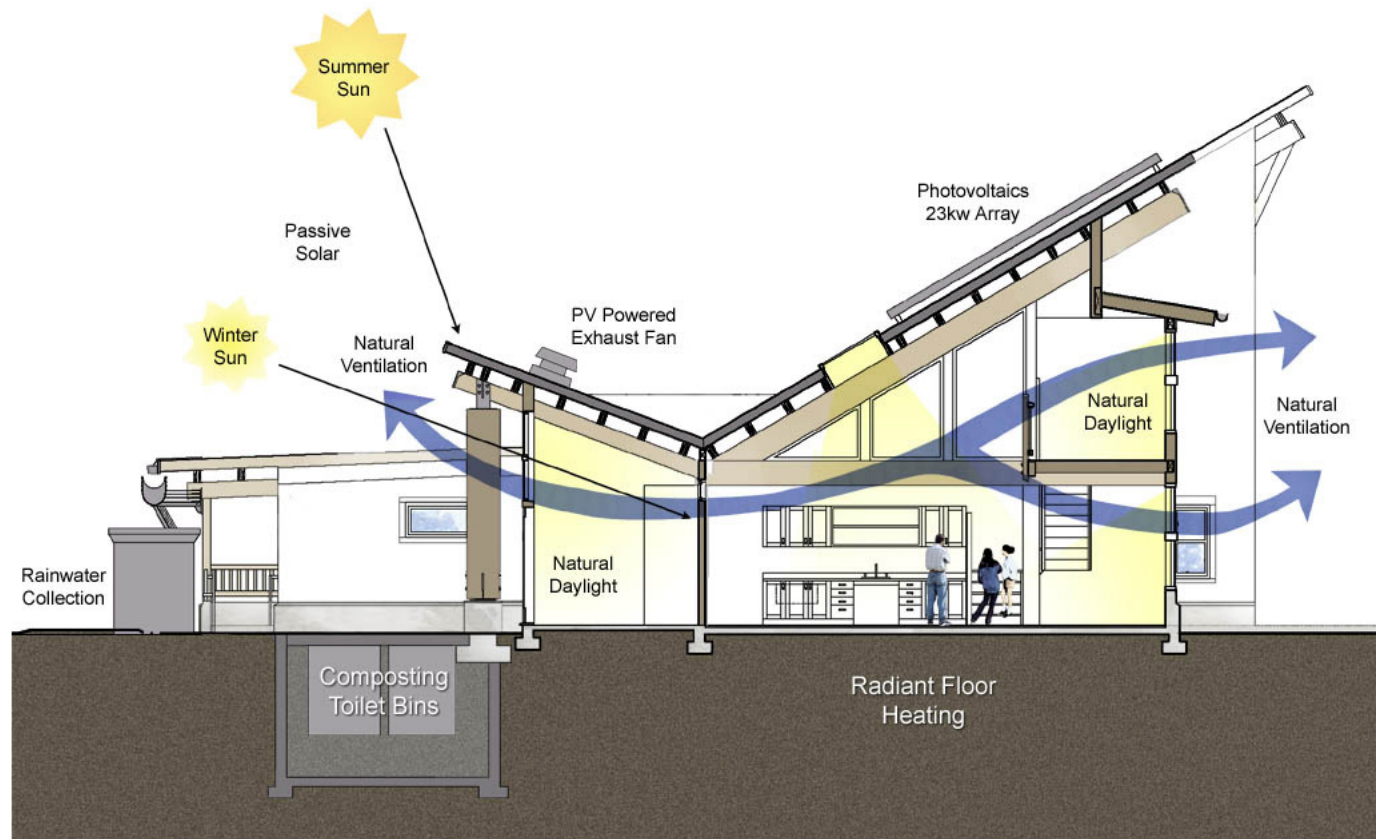
Not using Green Power indicates that electricity purchased *may* be from coal based sources

4 Energy & Atmosphere		Possible Points: 17	
Y	Prereq 1	Fundamental Building Systems Commissioning	
Y	Prereq 2	Minimum Energy Performance	
Y	Prereq 3	CFC Reduction in HVAC&R Equipment	
2	Credit 1.1	Optimize Energy Performance, 20% New / 10% Existing	2
1	Credit 1.2	Optimize Energy Performance, 30% New / 20% Existing	2
	Credit 1.3	Optimize Energy Performance, 40% New / 30% Existing	2
	Credit 1.4	Optimize Energy Performance, 50% New / 40% Existing	2
	Credit 1.5	Optimize Energy Performance, 60% New / 50% Existing	2
	Credit 2.1	Renewable Energy, 5%	1
	Credit 2.2	Renewable Energy, 10%	1
	Credit 2.3	Renewable Energy, 20%	1
	Credit 3	Additional Commissioning	1
1	Credit 4	Ozone Depletion	1
	Credit 5	Measurement & Verification	1
	Credit 6	Green Power	1

The building was designed to work with the Bioclimatic condition of Bainbridge Island. **West Coast (coastal) Temperate.**



# IslandWood – Passive Design Strategies: Heating and Cooling





# IslandWood – Energy and Atmosphere

(4/17 possible points)

- Exploration of passive heating systems
- Solar orientation, creation of “solar meadow” to ensure solar gain
- Large overhangs to prevent overheating
- Natural ventilation
- Solar hot water heating
- Photovoltaic panels



Although the appearance of the buildings gives the impression that its energy use might be as low as a Carbon Neutral Building, the numbers do not bear the same conclusion. ZERO Carbon is a number...

# IslandWood – Water Efficiency

(5/5 possible points)

WE Credit 1.1, Water Efficient Landscaping, Reduce by 50%

WE Credit 1.2, Water Efficient Landscaping, No Potable Water Use or No Irrigation

WE Credit 2, Innovative Wastewater Technologies

WE Credit 3.1, Water Use Reduction, 20% Reduction

WE Credit 3.2, Water Use Reduction, 30% Reduction



There is a soft connection between Water Efficiency and Carbon Neutrality if you think of an associated reduction in the energy requirement to run systems (i.e. electricity for pumps)



# IslandWood – Water Efficiency

(5/5 possible points)

- Rainwater collection from all roofs – use water for irrigation
- Composting toilets
- Waterless urinals and low flush toilets
- Living Machine to treat blackwater to tertiary level of purification



Statistics show that Water Efficiency credits have the highest percentage of buy in on LEED™ projects.



# IslandWood – Materials and Resources

(7/13 possible points)

MR Prerequisite 1, Storage & Collection of Recyclables

MR Credit 2.1, Construction Waste Management, Divert 50%

MR Credit 2.2, Construction Waste Management, Divert 75%

MR Credit 3.1, Resource Reuse, Specify 5%

MR Credit 4.1, Recycled Content: 5% (post-consumer + 1/2 post-industrial)

MR Credit 5.1, Local/Regional Materials, 20% Manufactured Locally

MR Credit 5.2, Local/Regional Materials, of 20% Above, 50% Harvested Locally

MR Credit 7, Certified Wood

These credits address the embodied energy of materials which responds to future Carbon Neutral considerations when we go beyond Operating Energy

Embodied Carbon in Building Materials



# IslandWood – Materials and Resources

(7/13 possible points)

- All timber cleared on site was milled into siding and furniture
- Buildings designed with exposed structural systems, including roof trusses, wood shear walls, and concrete slabs, eliminating need for interior finish materials
- Concrete with 50% flyash
- strawbale used for studio
- innovative recycled content “everywhere”



# IslandWood – Indoor Environmental Quality

(12/15 possible points)

- EQ Prerequisite 1, Minimum IAQ Performance
- EQ Prerequisite 2, Environmental Tobacco Smoke (ETS) Control
- EQ Credit 1, Carbon Dioxide (CO2) Monitoring
- EQ Credit 2, Increase Ventilation Effectiveness
- EQ Credit 3.1, Construction IAQ Management Plan, During Construction
- EQ Credit 3.2, Construction IAQ Management Plan, Before Occupancy
- EQ Credit 4.1, Low-Emitting Materials, Adhesives & Sealants
- EQ Credit 4.2, Low-Emitting Materials, Paints
- EQ Credit 4.3, Low-Emitting Materials, Carpet
- EQ Credit 4.4, Low-Emitting Materials, Composite Wood
- EQ Credit 5, Indoor Chemical & Pollutant Source Control
- EQ Credit 6.1, Controllability of Systems, Perimeter
- EQ Credit 7.1, Thermal Comfort, Comply with ASHRAE 55-1992
- EQ Credit 8.2, Daylight & Views, Views for 90% of Spaces



Operating energy

Daylighting has the potential to reduce the requirement for electricity IF used in conjunction with control systems



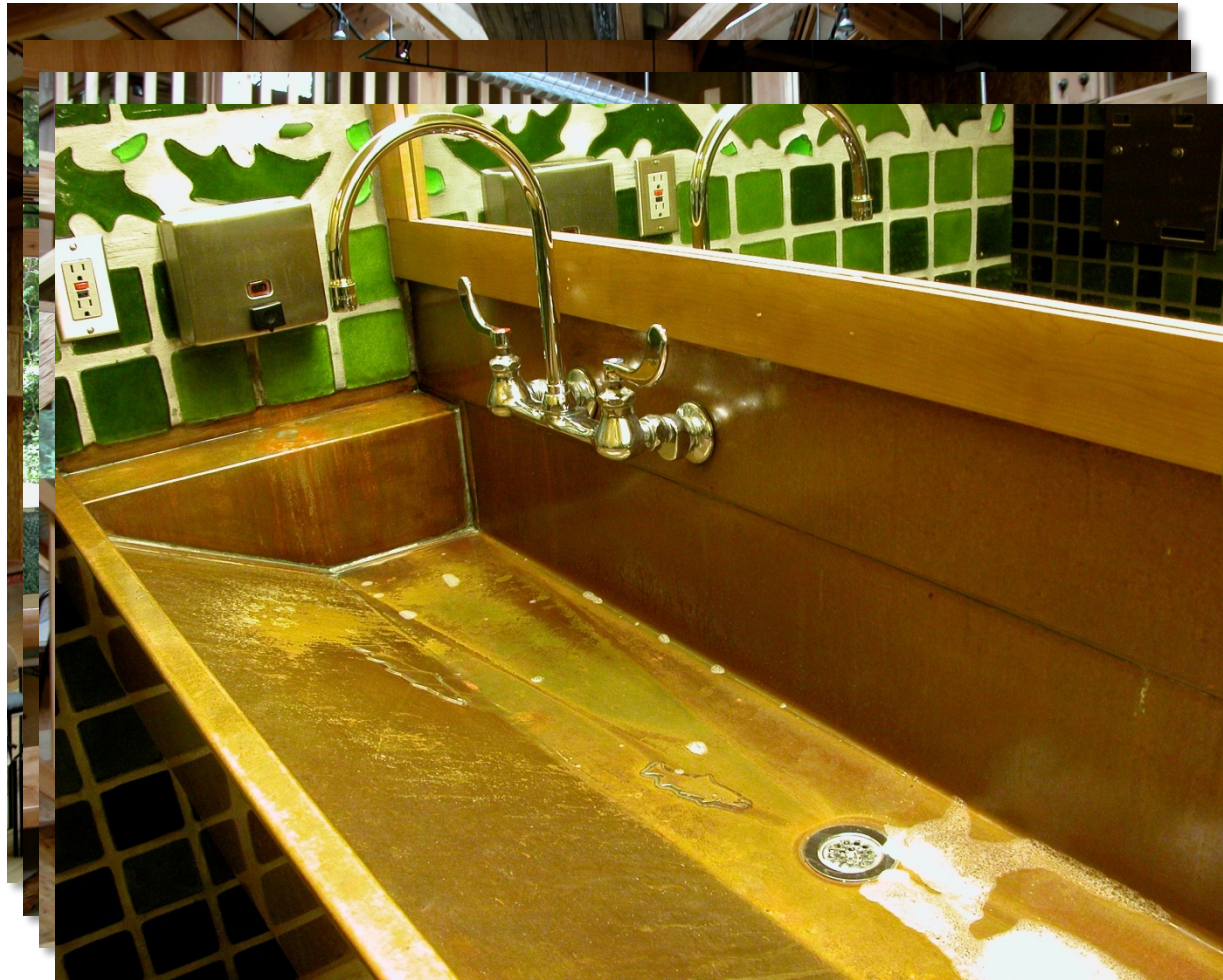


Daylit spaces at Islandwood



# IslandWood – Indoor Environmental Quality (12/15 possible points)

- All buildings are extensively daylighted
- windows are operable
- extensive incorporation of low emitting materials



# IslandWood – Innovation in Design Process

(3/5 possible points)

ID Credit 1.1, Innovation in Design "Environmental Education"

ID Credit 1.2, Innovation in Design "High Volume Fly Ash"

ID Credit 2, LEED® Accredited Professional

Carbon Neutrality could be used to gain an Innovation Credit or Multiple Innovation Credits if you exceed the maximum expectations in a number of credit areas.





# Existing Carbon Neutral/Zero Energy Buildings

## Zero Energy Buildings

### Using the Database

### Search by Project Name

### Search by Owner

### Search by Location

### Search by Energy Data

### Search by Building Type & Size

### List All Projects











### Detailed Search

The Zero Energy Buildings Database features profiles of commercial buildings that produce as much energy as they use over the course of a year. [Learn more](#) about the types of zero energy buildings. This database highlights projects from across the country and provides ideas that can be applied to any new building.

The Zero Energy Buildings Database is part of the High Performance Buildings Database which lists many additional projects. Visit the [High Performance Buildings Database](#) to discover more energy efficient building techniques.

To find out more about the zero energy buildings listed below, simply click the name of a project to view in-depth information about the design and construction process, financing, energy use, materials, indoor environment, and more.

Displaying 10 project(s) in the table below. ([click here](#) for help).

	Picture	Name	Owner	Location	Building Type	Floor Area (ft <sup>2</sup> )	Annual Purchased Energy (kBtu/ft <sup>2</sup> )
<input type="checkbox"/>		<a href="#">Aldo Leopold Legacy Center</a>	The Aldo Leopold Foundation, Inc.	Baraboo, WI	Commercial office; Interpretive Center	11,900	-2.02
<input type="checkbox"/>		<a href="#">Audubon Center at Debs Park</a>	The National Audubon Society	Los Angeles, CA	Recreation; Interpretive Center; Park	5,020	
<input type="checkbox"/>		<a href="#">Challengers Tennis Club</a>	Whittier Foundation	Los Angeles, CA	Recreation	3,500	-0.0955
<input type="checkbox"/>		<a href="#">Environmental Tech. Center, Sonoma State</a>	Sonoma State University	Rohnert Park, CA	Higher education; Laboratory	2,200	-1.47
<input type="checkbox"/>		<a href="#">Hawaii Gateway Energy Center</a>	Natural Energy Laboratory of Hawaii Authority (NELHA)	Kailua-Kona, HI	Commercial office; Interpretive Center; Assembly; Other	3,600	-3.46
<input type="checkbox"/>		<a href="#">IdeAs Z2 Design Facility</a>	David and Stephanía Kaneda	San Jose, CA	Commercial office	6,560	-0.00052
<input type="checkbox"/>		<a href="#">Net zero house— Charlotte, VT</a>	David Pill	Charlotte, VT	Single-family residential	2,970	
<input type="checkbox"/>		<a href="#">Oberlin College Lewis Center</a>	Oberlin College	Oberlin, OH	Higher education; Library; Assembly; Campus	13,600	-4.23
<input type="checkbox"/>		<a href="#">Science House</a>	Science Museum of Minnesota	St. Paul, MN	Interpretive Center	1,530	0
<input type="checkbox"/>		<a href="#">TD Bank - Cypress Creek Store</a>	TD Bank, N.A.	Ft Lauderdale, FL	Retail	3,970	

10 project(s)

The list on <http://zeb.buildinggreen.com/> sits at 10 projects.

# Aldo Leopold Legacy Center

## Baraboo, Wisconsin



The Kubala Washatko Architects  
LEED™ Platinum 2007

Technical information from Prof. Michael Utzinger, University of Wisconsin-Milwaukee

# Aldo Leopold Center LEED™ Analysis

12/14 Sustainable Sites

5/5 Water Efficiency

**17/17 Energy and Atmosphere**

7/13 Materials and Resources

15/15 Indoor Environmental Quality

5/5 Innovation and Design Process

**61/69 Total**



For more detailed info on the Leopold Center, visit

<http://www.aldoleopold.org/legacycenter/carbonneutral.html>

and

<http://leedcasestudies.usgbc.org/overview.cfm?ProjectID=946>

Operating  
Energy of  
Building



80% of the problem!

Landscape  
+ Site

Disturbance vs. sequestration

Embodied  
Carbon in  
Building  
Materials

People, "Use" +  
Transportation

Renewables  
+ Site  
Generation

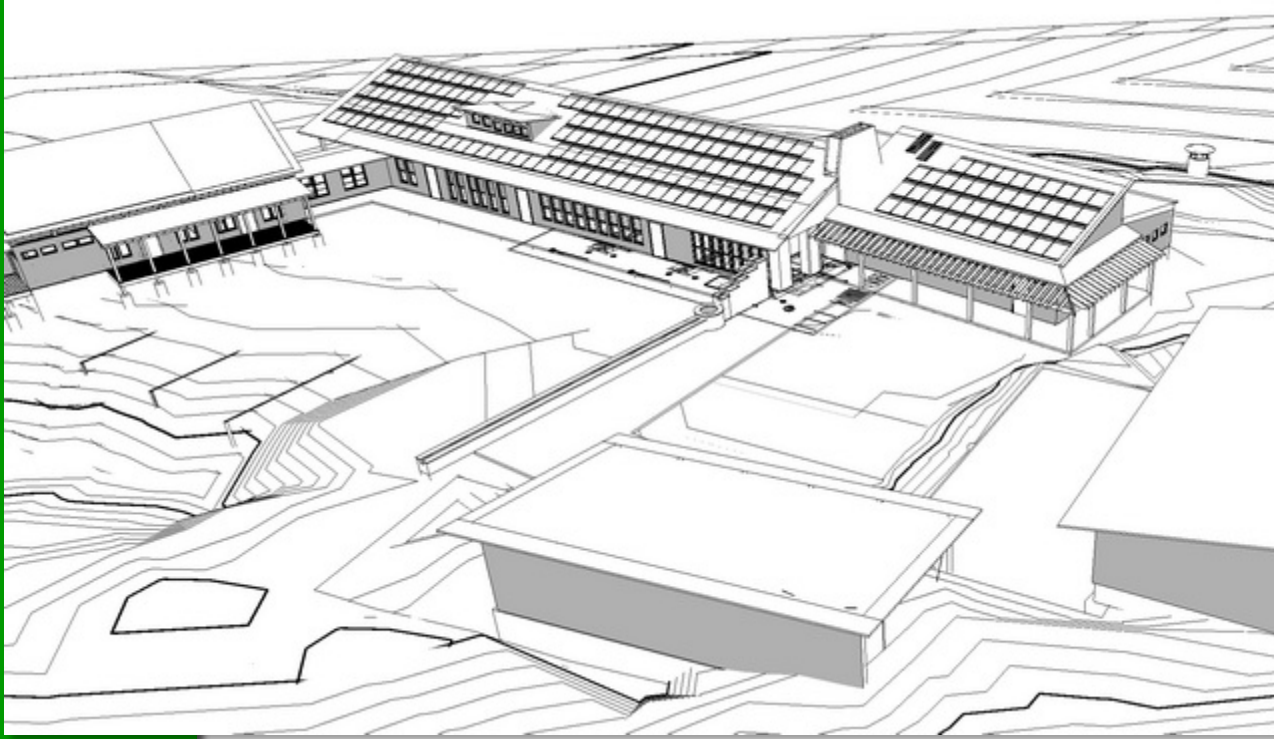
Counting Carbon costs....

+ purchased offsets



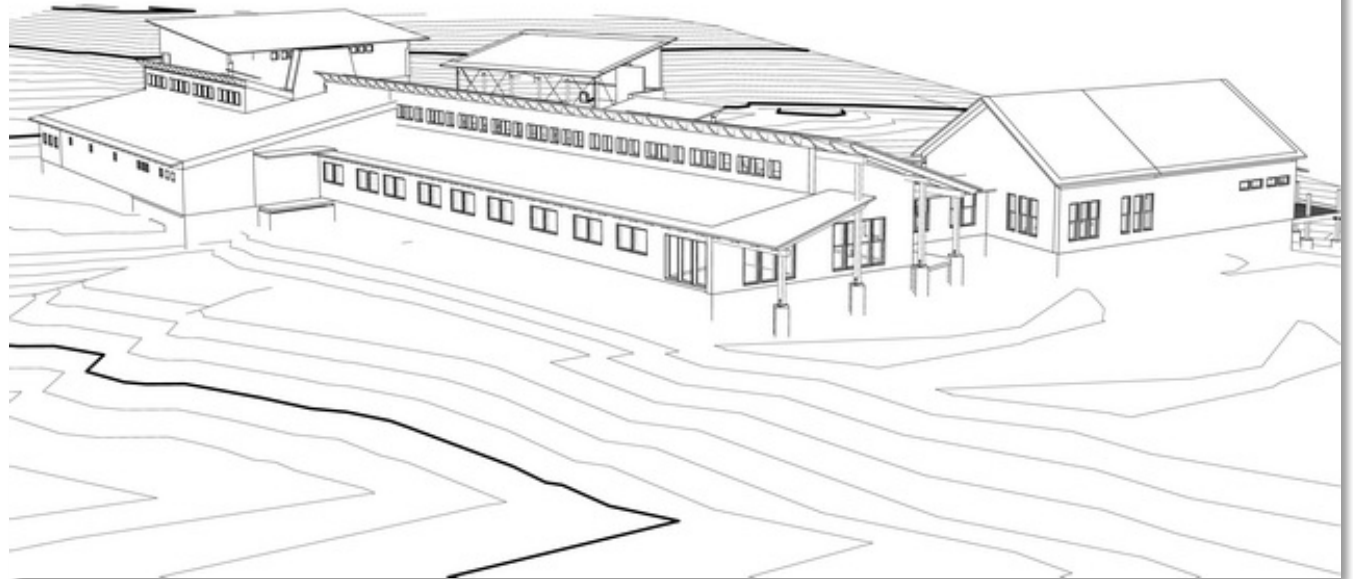
# Leopold Approach to Carbon Neutral Design

- **Design a Net Zero (Operating Energy) Building**
- **Apply Carbon Balance to Building Operation  
(Ignore Carbon Emissions due to  
Construction)**
- **Include Carbon Sequestration in Forests  
Managed by Aldo Leopold Foundation**
- **Design to LEED™ Platinum (as well)**



The South elevation is designed to capture energy.

The North elevation is designed for thermal resistance, daylighting and ventilation.



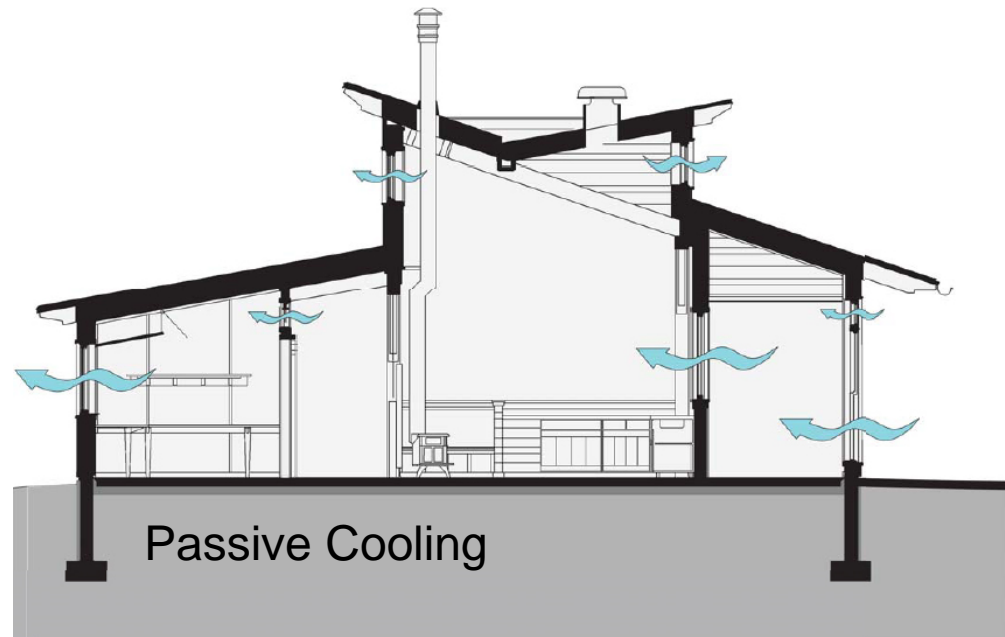
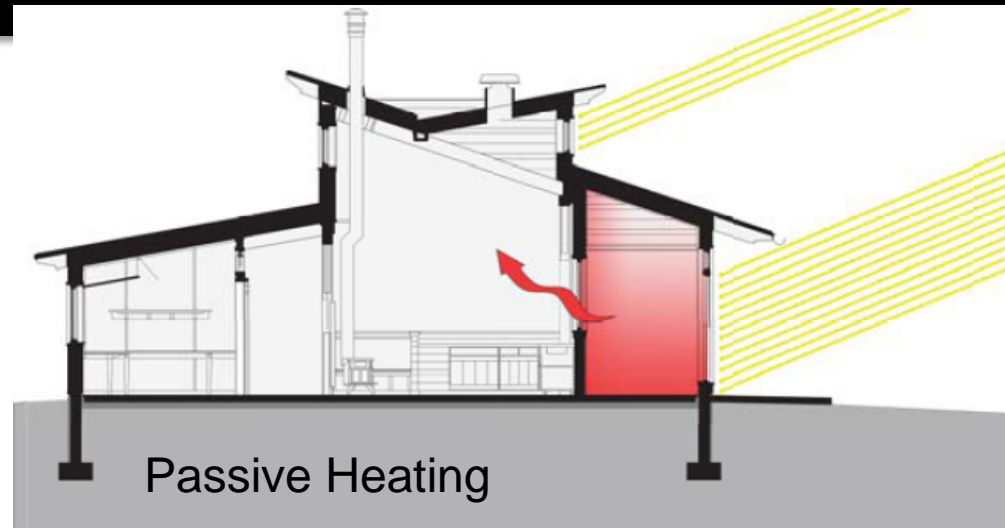
The buildings were arranged in a U shape around a solar meadow that ensured access





# Architectural Design Strategies

- Start with bioclimatic design
- Program Thermal Zones
- All perimeter zones (no interior zones – skin load dominated building)
- Daylight all occupied zones
- Natural ventilation in all occupied zones
- Double code insulation levels
- Passive solar heating
- Shade windows during summer





# Energy and Atmosphere, 17 of 17 possible points: EA Credit 1

EA Prerequisite 1, Fundamental Building Systems Commissioning

EA Prerequisite 2, Minimum Energy Performance

EA Prerequisite 3, CFC Reduction in HVAC&R Equipment

**EA Credit 1.1a, Optimize Energy Performance, 15% New 5% Existing**

**EA Credit 1.1b, Optimize Energy Performance, 20% New 10% Existing**

**EA Credit 1.2a, Optimize Energy Performance, 25% New 15% Existing**

**EA Credit 1.2b, Optimize Energy Performance, 30% New 20% Existing**

**EA Credit 1.3a, Optimize Energy Performance, 35% New 25% Existing**

**EA Credit 1.3b, Optimize Energy Performance, 40% New 30% Existing**

**EA Credit 1.4a, Optimize Energy Performance, 45% New 35% Existing**

**EA Credit 1.4b, Optimize Energy Performance, 50% New 40% Existing**

**EA Credit 1.5a, Optimize Energy Performance, 55% New 45% Existing**

**EA Credit 1.5b, Optimize Energy Performance, 60% New 50% Existing**

EA Credit 2.1, Renewable Energy, 5%

EA Credit 2.2, Renewable Energy, 10%


EA Credit 2.3, Renewable Energy, 20%

EA Credit 3, Additional Commissioning

EA Credit 4, Ozone Depletion

EA Credit 5, Measurement and Verification

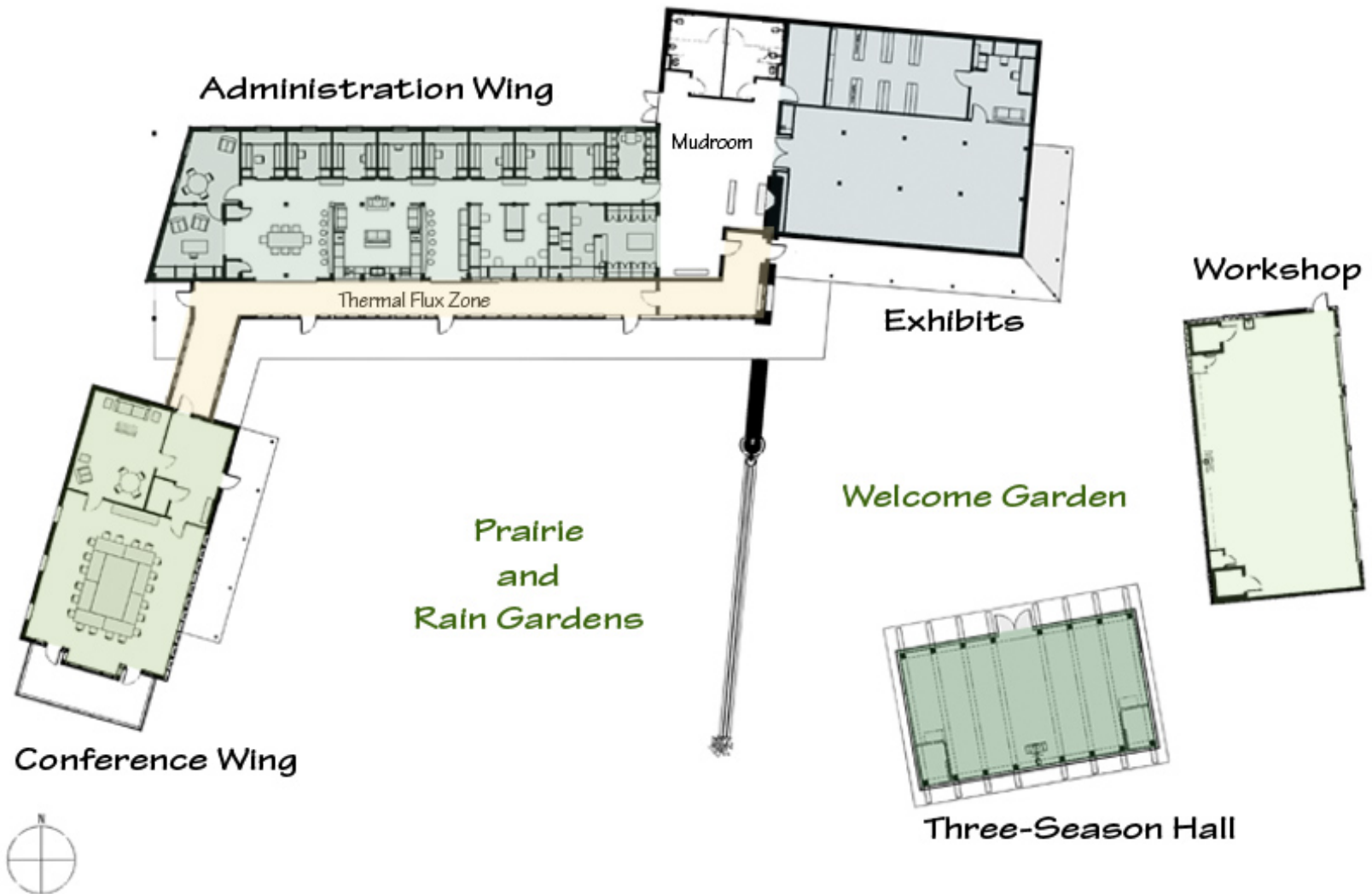
EA Credit 6, Green Power



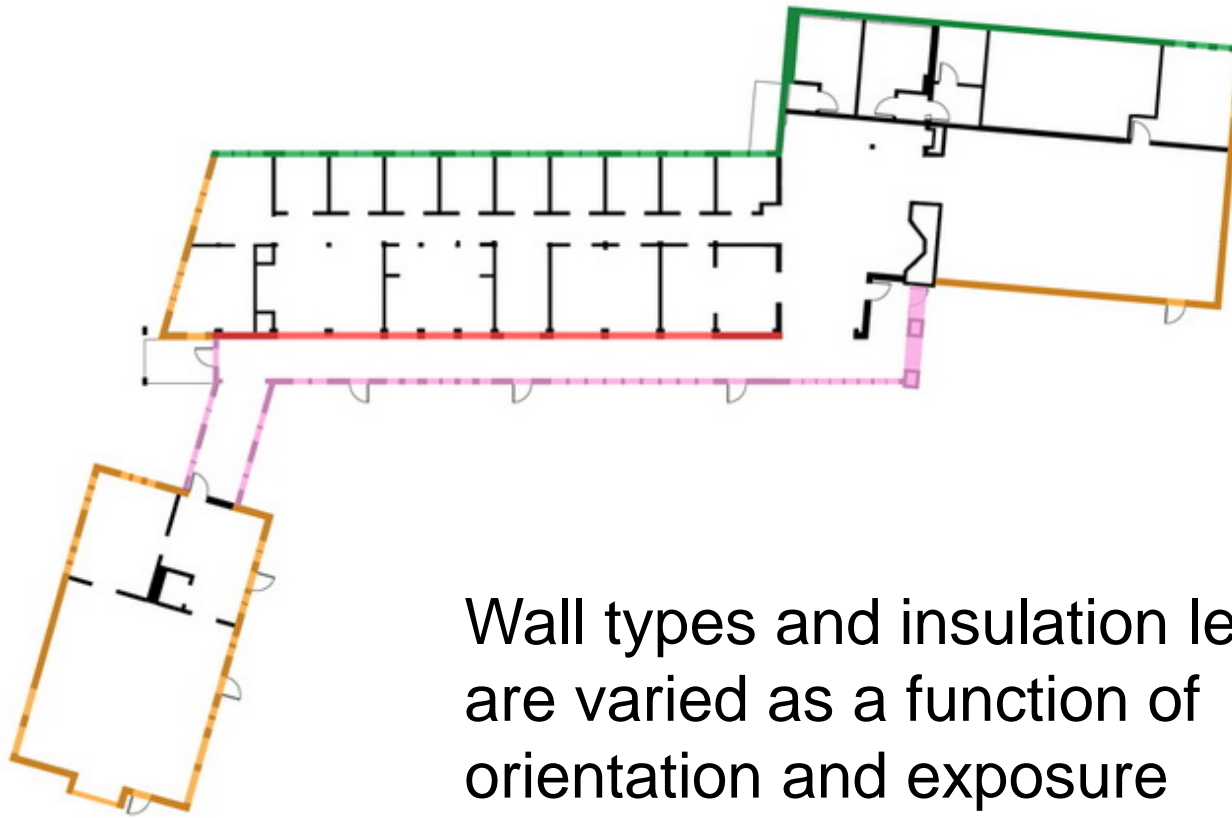
Operating  
energy

**OPTIMIZE = REDUCTION**  
This needs to be the main  
area of focus for low Carbon  
design.

# Thermal Zones ~ Perimeter Zones



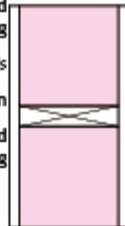
Keep the buildings thin to allow for maximum daylight and use of solar for passive heating with operable windows to make natural ventilation work.



Wall types and insulation levels are varied as a function of orientation and exposure

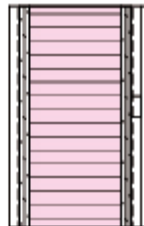
**Wall Type A**  
*Interior to Exterior*

- 1x Interior Wood Siding
- 2x8 Wood Studs
- Sprayed Insulation
- 1x Interior Wood Siding



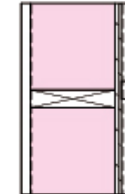
**Wall Type B**  
*Interior to Exterior*

- 1x Interior Wood Siding
- Vapor Barrier
- 8 1/4" Structural Insulated Panel
- Air Barrier
- Air Space w/ Vertical Furring Strip
- 1x Flatboard Exterior Wood Siding



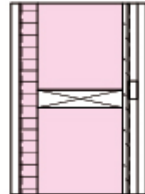
**Wall Type C**  
*Interior to Exterior*

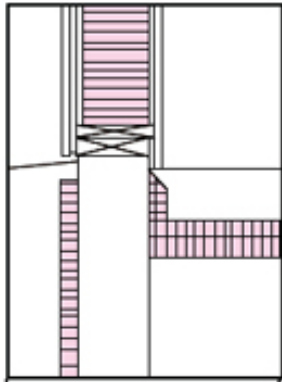
- 1x Interior Wood Siding
- Vapor Barrier
- 2x8 Stud Walls with Sprayed Insulation
- 1/2" Exterior Wall Sheathing
- Air Barrier
- Air Space w/ Vertical Furring Strip
- 1x Flatboard Exterior Wood Siding



**Wall Type D**  
*Interior to Exterior*

- 1x Interior Wood Siding
- Vapor Barrier
- 1 1/2" Rigid Insulation
- 2x8 Stud Walls with Sprayed Insulation
- 1/2" Exterior Wall Sheathing
- Air Barrier
- Air Space w/ Vertical Furring Strip
- 1x Flatboard Exterior Wood Siding





ENCLOSURE AREA PER UNIT FLOOR AREA

**1.91** SF/SF

ENCLOSURE THERMAL TRANSFER RATE PER FLOOR AREA

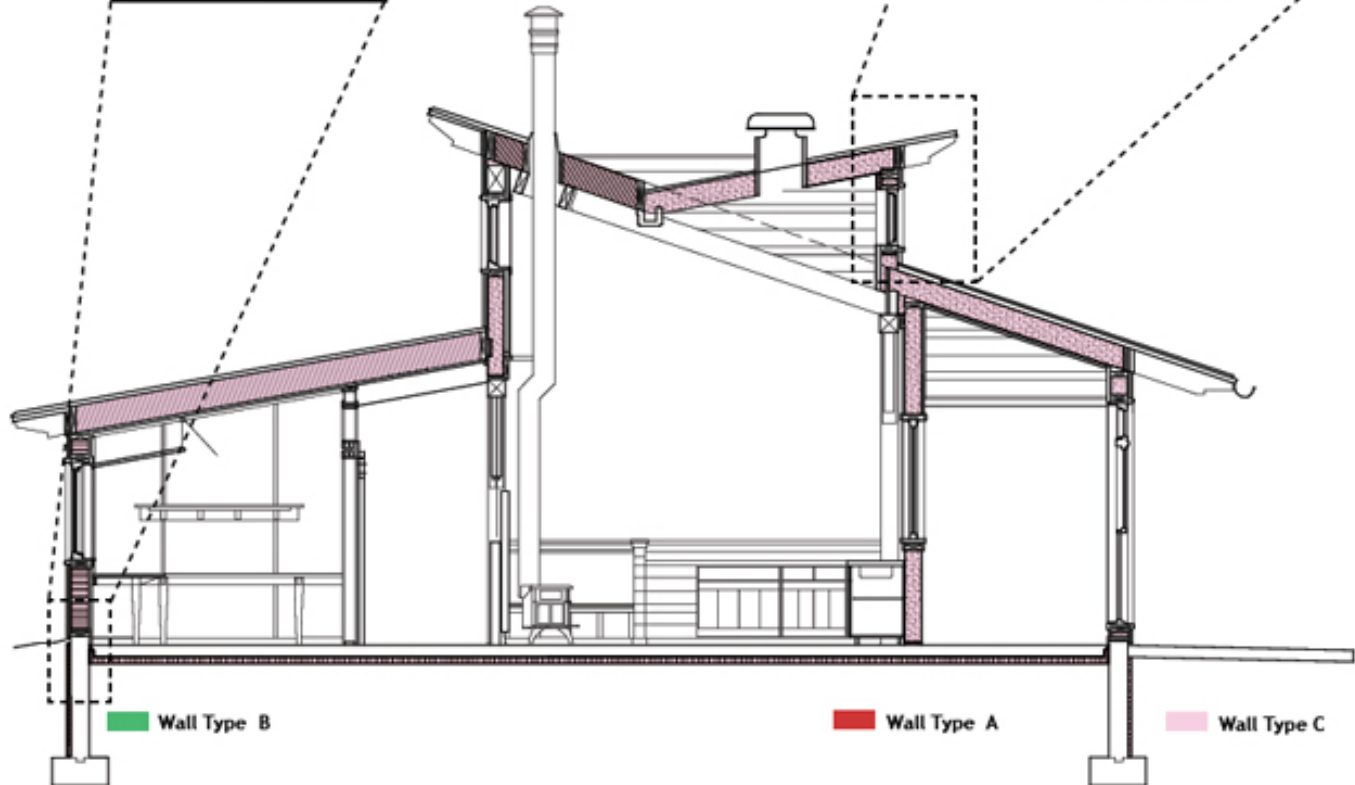
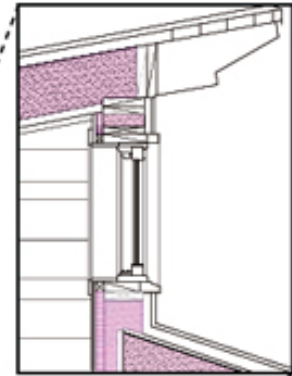
**0.14** Btu/ HR-SF-F

BUILDING GLAZING RATIO TOTAL

**12.6%**

OPERABLE WINDOW AREA PER CONDITIONED S.F.

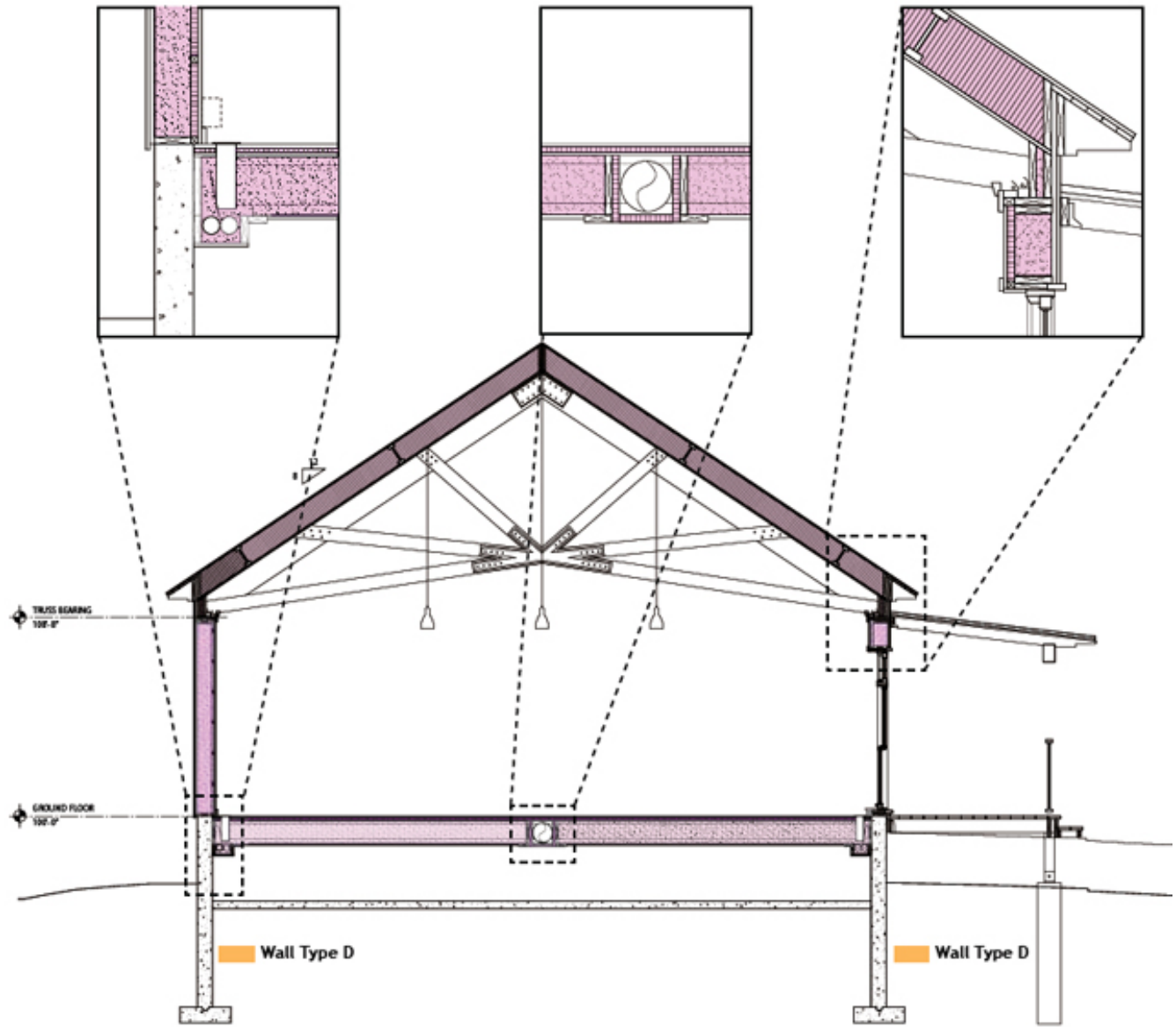
**16.1%**

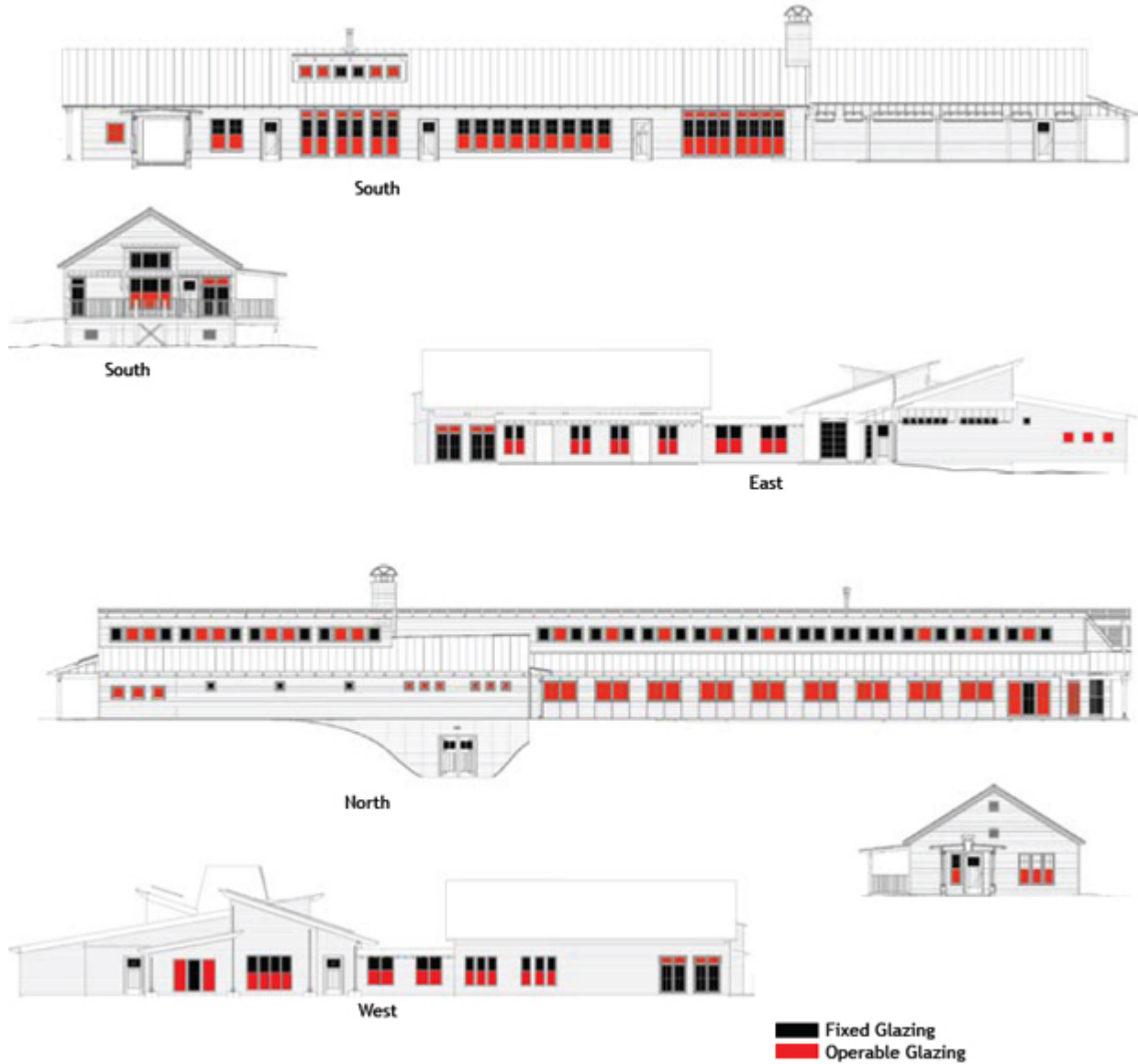


Wall Type B

Wall Type A

Wall Type C

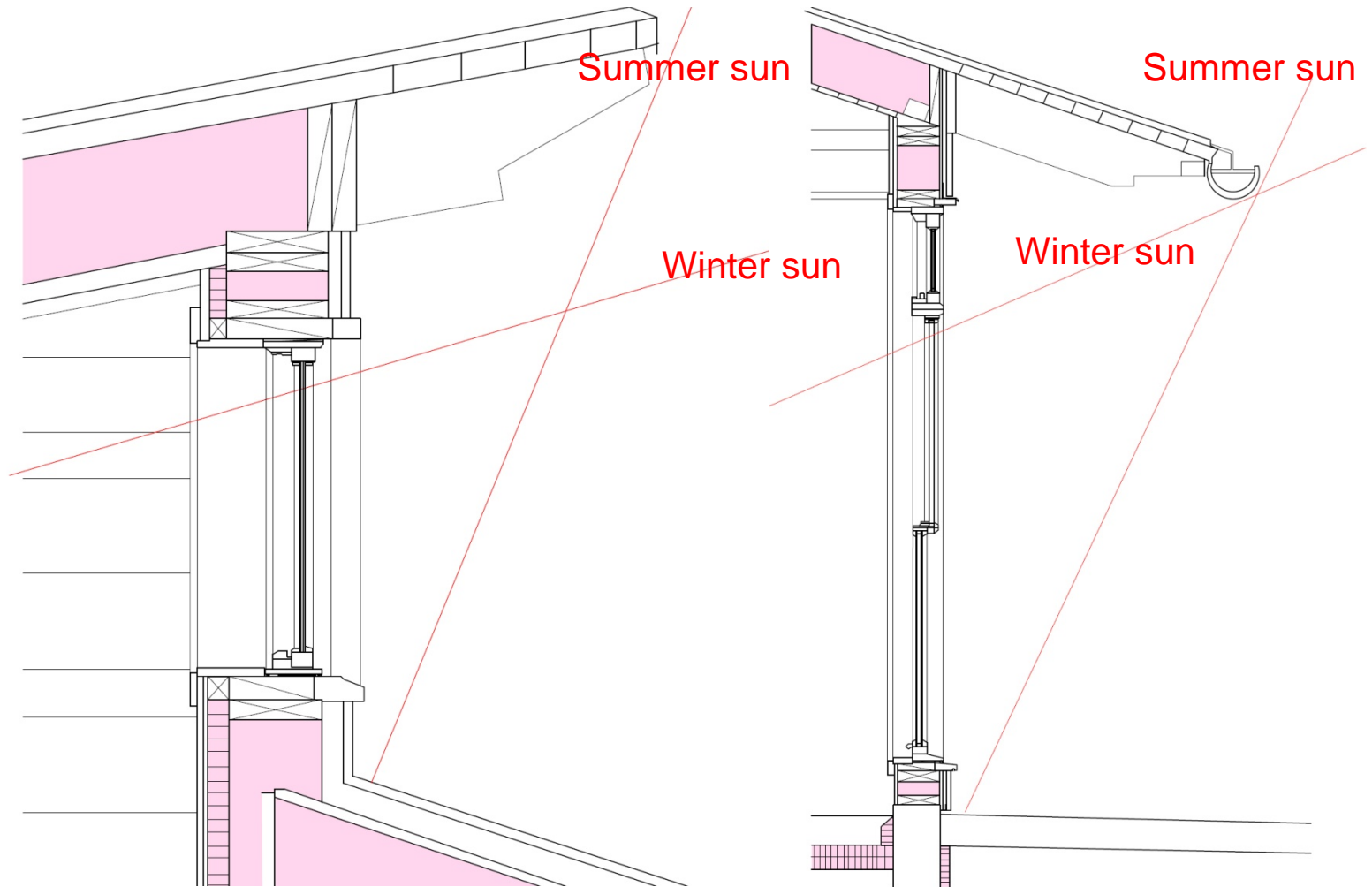




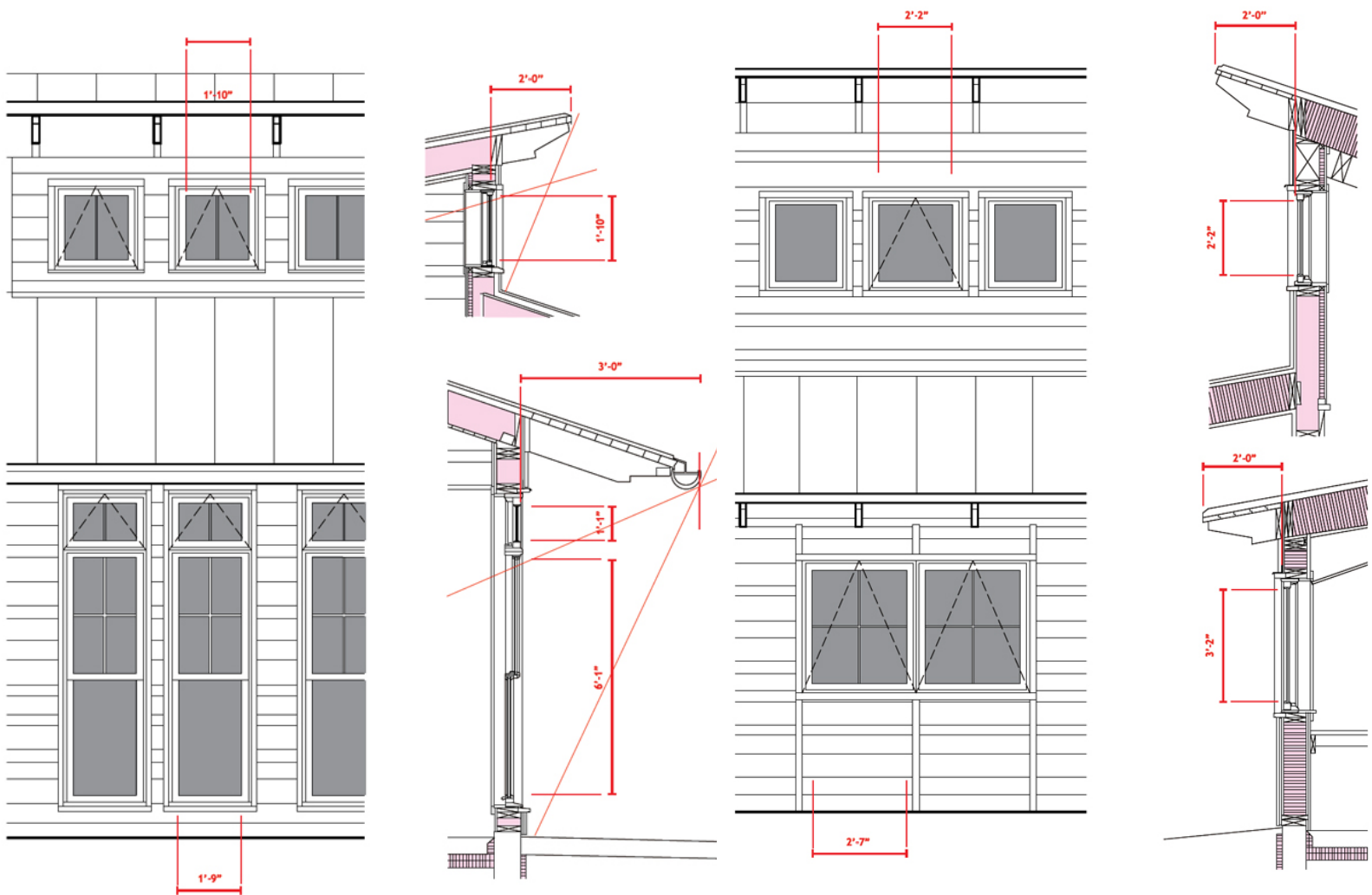
Glazing study for fixed vs operable and orientation



# Passive Cooling: Shade Windows During Summer



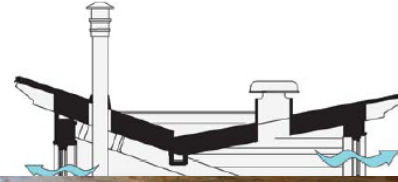
Basic first tier principle of HEAT AVOIDANCE.



Facades are fine tuned for orientation – overhang length and window size varies

# Natural Ventilation

- Natural ventilation strategy based on NO A/C provision for the building
- Operable windows
- Flow through strategy
- Insect screens to keep out pests



# Energy and Atmosphere, 17 of 17 possible points: EA Credit 2 and Credit 6

EA Prerequisite 1, Fundamental Building Systems Commissioning

EA Prerequisite 2, Minimum Energy Performance

EA Prerequisite 3, CFC Reduction in HVAC&R Equipment

EA Credit 1.1a, Optimize Energy Performance, 15% New 5% Existing

EA Credit 1.1b, Optimize Energy Performance, 20% New 10% Existing

EA Credit 1.2a, Optimize Energy Performance, 25% New 15% Existing

EA Credit 1.2b, Optimize Energy Performance, 30% New 20% Existing

EA Credit 1.3a, Optimize Energy Performance, 35% New 25% Existing

EA Credit 1.3b, Optimize Energy Performance, 40% New 30% Existing

EA Credit 1.4a, Optimize Energy Performance, 45% New 35% Existing

EA Credit 1.4b, Optimize Energy Performance, 50% New 40% Existing

EA Credit 1.5a, Optimize Energy Performance, 55% New 45% Existing

EA Credit 1.5b, Optimize Energy Performance, 60% New 50% Existing

**EA Credit 2.1, Renewable Energy, 5%**

**EA Credit 2.2, Renewable Energy, 10%**

**EA Credit 2.3, Renewable Energy, 20%**

EA Credit 3, Additional Commissioning

EA Credit 4, Ozone Depletion

EA Credit 5, Measurement and Verification

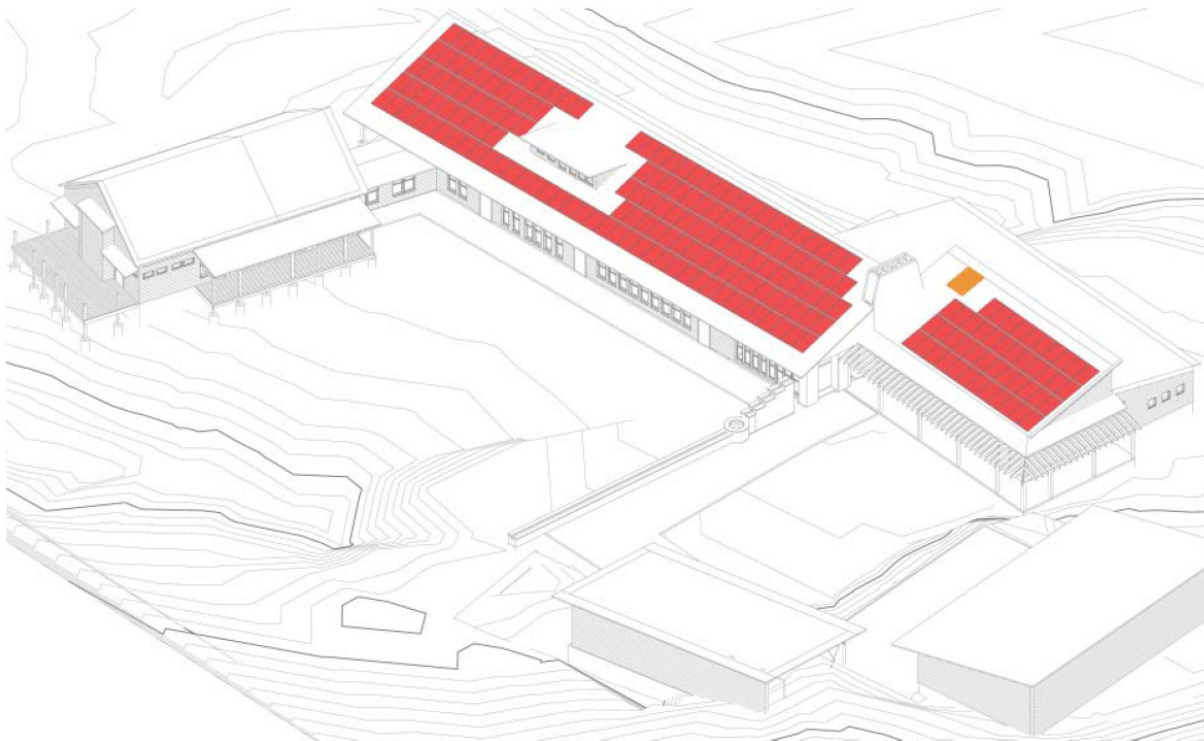
**EA Credit 6, Green Power**

Renewables  
+ Site  
Generation

If Optimization has not been exhausted, it is very unlikely that Renewable Energy will be adequate to power the mechanical systems.



# #1 - Net Zero Energy Design



SOLAR PV DENSITY  
(conditioned s.f.)

**4.66** Watt / SF

SOLAR THERMAL DENSITY  
(conditioned s.f.)

**.012** SF / SF

Renewables  
+ Site  
Generation

A \$US250,000 PV array was included at the outset of the project budget and the building was designed to operate within the amount of electricity that this would generate.



Almost every square inch of roof was used for PV and solar hot water array mounting.





# Ground Source Heat Pumps



Super insulate hot water runs to minimize heat losses.



# Sustainable Sites, 12 of 14 possible points: SS Credit 3

SS Prerequisite 1, Erosion & Sedimentation Control

SS Credit 1, Site Selection

**SS Credit 3, Brownfield Redevelopment**

SS Credit 4.2, Alternative Transportation, Bicycle Storage & Changing Rooms

SS Credit 4.3, Alternative Transportation, Alternative Fuel Refueling Stations

SS Credit 4.4, Alternative Transportation, Parking Capacity

SS Credit 5.1, Reduced Site Disturbance, Protect or Restore Open Space

SS Credit 5.2, Reduced Site Disturbance, Development Footprint

SS Credit 6.1, Stormwater Management, Rate and Quantity

SS Credit 6.2, Stormwater Management, Treatment

SS Credit 7.1, Landscape & Exterior Design to Reduce Heat Islands, Non-Roof

SS Credit 7.2, Landscape & Exterior Design to Reduce Heat Islands, Roof

SS Credit 8, Light Pollution Reduction

Landscape  
+ Site

Greening an existing brownfield can add plant materials to a site that are capable of sequestering carbon.

# Sustainable Sites, 12 of 14 possible points: SS Credit 4

SS Prerequisite 1, Erosion & Sedimentation Control

SS Credit 1, Site Selection

SS Credit 3, Brownfield Redevelopment

SS Credit 4.2, Alternative Transportation, Bicycle Storage & Changing Rooms

SS Credit 4.3, Alternative Transportation, Alternative Fuel Refueling Stations

SS Credit 4.4, Alternative Transportation, Parking Capacity

SS Credit 5.1, Reduced Site Disturbance, Protect or Restore Open Space

SS Credit 5.2, Reduced Site Disturbance, Development Footprint

SS Credit 6.1, Stormwater Management, Rate and Quantity

SS Credit 6.2, Stormwater Management, Treatment

SS Credit 7.1, Landscape & Exterior Design to Reduce Heat Islands, Non-Roof

SS Credit 7.2, Landscape & Exterior Design to Reduce Heat Islands, Roof

SS Credit 8, Light Pollution Reduction

People, "Use" +  
Transportation

Alternative transportation reduces the GHG associated with travel to and from the building.

# Sustainable Sites, 12 of 14 possible points:

## SS Credit 5

SS Prerequisite 1, Erosion & Sedimentation Control

SS Credit 1, Site Selection

SS Credit 3, Brownfield Redevelopment

SS Credit 4.2, Alternative Transportation, Bicycle Storage & Changing Rooms

SS Credit 4.3, Alternative Transportation, Alternative Fuel Refueling Stations

SS Credit 4.4, Alternative Transportation, Parking Capacity

**SS Credit 5.1, Reduced Site Disturbance, Protect or Restore Open Space**

**SS Credit 5.2, Reduced Site Disturbance, Development Footprint**

SS Credit 6.1, Stormwater Management, Rate and Quantity

SS Credit 6.2, Stormwater Management, Treatment

SS Credit 7.1, Landscape & Exterior Design to Reduce Heat Islands, Non-Roof

SS Credit 7.2, Landscape & Exterior Design to Reduce Heat Islands, Roof

SS Credit 8, Light Pollution Reduction

Landscape  
+ Site

These credits can add plant materials to a site that are capable of sequestering carbon or repair existing natural landscape. Disturbance of the soil releases carbon into the atmosphere.



# Sustainable Sites, 12 of 14 possible points:

## SS Credit 7

SS Prerequisite 1, Erosion & Sedimentation Control

SS Credit 1, Site Selection

SS Credit 3, Brownfield Redevelopment

SS Credit 4.2, Alternative Transportation, Bicycle Storage & Changing Rooms

SS Credit 4.3, Alternative Transportation, Alternative Fuel Refueling Stations

SS Credit 4.4, Alternative Transportation, Parking Capacity

SS Credit 5.1, Reduced Site Disturbance, Protect or Restore Open Space

SS Credit 5.2, Reduced Site Disturbance, Development Footprint

SS Credit 6.1, Stormwater Management, Rate and Quantity

SS Credit 6.2, Stormwater Management, Treatment


**SS Credit 7.1, Landscape & Exterior Design to Reduce Heat Islands, Non-Roof**

**SS Credit 7.2, Landscape & Exterior Design to Reduce Heat Islands, Roof**

SS Credit 8, Light Pollution Reduction



Landscape  
+ Site



Operating  
energy

Heat island reduction lowers summer temperatures and reduces cooling load. (*Impossible to quantify...*) If plantings are used to do this, they can sequester carbon as well.

# Material choice matters.

- **Material choice can reduce your building's *embodied* carbon footprint.**
- Where did the material come from?
- Is it local?
- Did it require a lot of energy to extract it or to get it to your building?
- Can it be replaced at the source?
- Was it recycled or have significant post consumer recycled content?
- Can it be recycled or reused *easily*; i.e. with minimal additional energy?
- Is the material durable or will it need to be replaced (*lifecycle analysis*)?
- **Select the right material for the right end use**

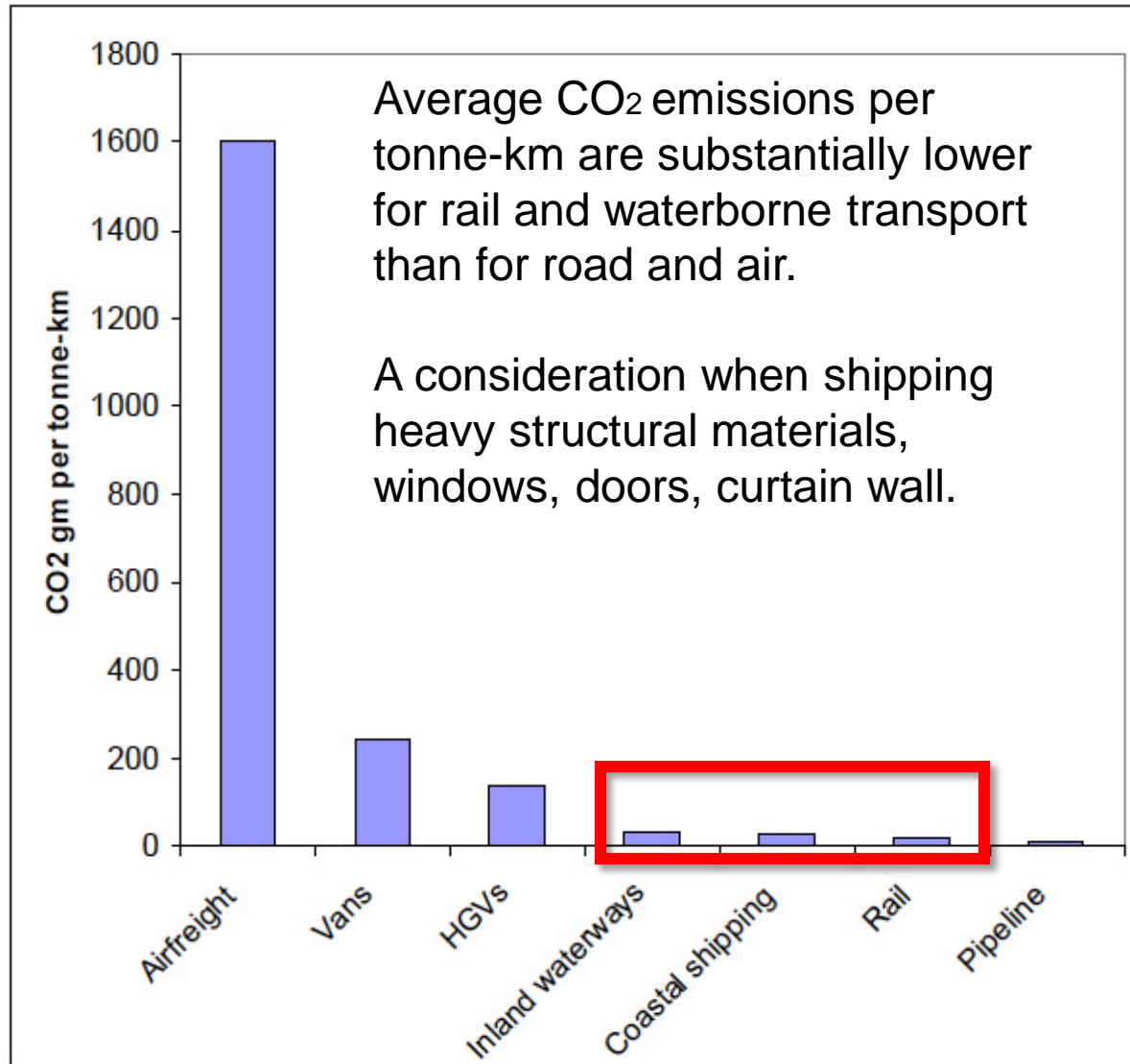


Foster's GLA – may claim to be high performance, but it uses many high energy materials.



Green on the Grand, Canada's first C-2000 building chose to import special windows from a distance rather than employ shading devices to control solar gain and glare.

# Transportation choice matters.



# Materials and Resources, 7 of 13 possible points: MR Credit 4

MR Prerequisite 1, Storage & Collection of Recyclables

MR Credit 2.1, Construction Waste Management, Divert 50%

MR Credit 2.2, Construction Waste Management, Divert 75%

**MR Credit 4.1, Recycled Content: 5% (post-consumer + 1/2 post-industrial)**

**MR Credit 4.2, Recycled Content: 10% (post-consumer + 1/2 post-industrial)**

MR Credit 5.1, Local/Regional Materials, 20% Manufactured Locally

MR Credit 5.2, Local/Regional Materials, of 20% Above, 50% Harvested Locally

MR Credit 7, Certified Wood

Embodied  
Carbon in  
Building  
Materials



Many of the MR credits will impact embodied carbon but it is not currently part of the calculation.



Year of entry:

1994

1979

1964

1949

1934

1919

1909

1

Cars

2

Appliances

3

Cans

4

Chairs

5

Building

6

Tanks

7

Bridge

## The Life of Steel:

1<sup>st</sup> life as:

# Materials and Resources, 7 of 13 possible points: MR Credit 5

MR Prerequisite 1, Storage & Collection of Recyclables

MR Credit 2.1, Construction Waste Management, Divert 50%

MR Credit 2.2, Construction Waste Management, Divert 75%

MR Credit 4.1, Recycled Content: 5% (post-consumer + 1/2 post-industrial)

MR Credit 4.2, Recycled Content: 10% (post-consumer + 1/2 post-industrial)

**MR Credit 5.1, Local/Regional Materials, 20% Manufactured Locally**

**MR Credit 5.2, Local/Regional Materials, of 20% Above, 50% Harvested Locally**

MR Credit 7, Certified Wood

Embodied  
Carbon in  
Building  
Materials

People, "Use" +  
Transportation

The Leopold Foundation had a most unusual circumstance, owning their own Forest. However it is not that difficult to source materials locally.



# Materials and Resources, 7 of 13 possible points: MR Credit 7

MR Prerequisite 1, Storage & Collection of Recyclables

MR Credit 2.1, Construction Waste Management, Divert 50%

MR Credit 2.2, Construction Waste Management, Divert 75%

MR Credit 4.1, Recycled Content: 5% (post-consumer + 1/2 post-industrial)

MR Credit 4.2, Recycled Content: 10% (post-consumer + 1/2 post-industrial)

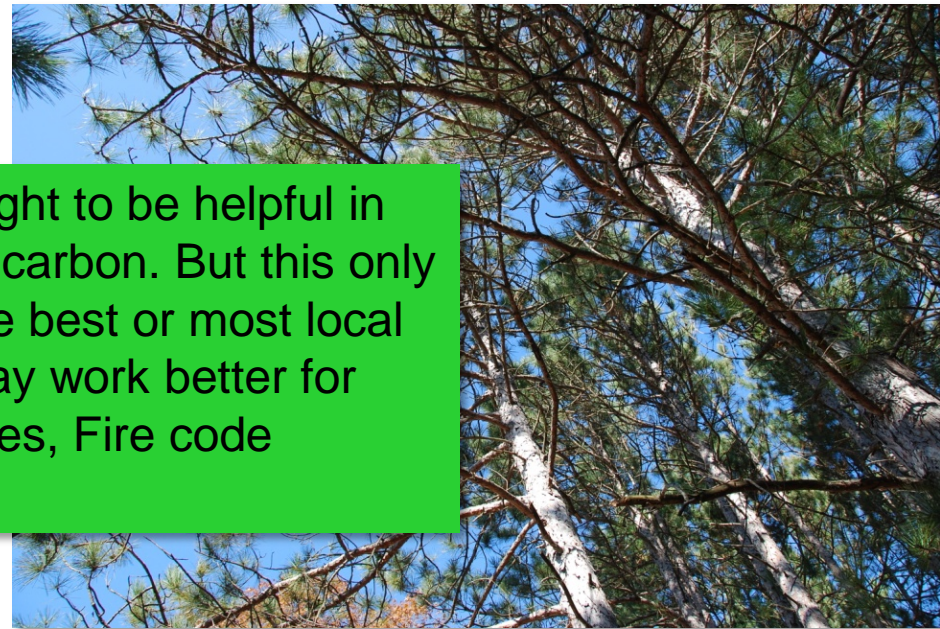
MR Credit 5.1, Local/Regional Materials, 20% Manufactured Locally

MR Credit 5.2, Local/Regional Materials, of 20% Above, 50% Harvested Locally

**MR Credit 7, Certified Wood**

Simply using wood is thought to be helpful in GHG as wood sequesters carbon. But this only makes sense if wood is the best or most local choice. Other materials may work better for different building types, uses, Fire code restrictions, etc.

Embodied  
Carbon in  
Building  
Materials





## #2 - Site Harvested Lumber:

Embodied  
Carbon in  
Building  
Materials



The building was designed around the size and quantity of lumber that could be sustainably harvested from the Leopold Forest.



# Reuse to reduce impact

- Reuse of a building, part of a building or elements reduces the carbon impact by avoidance of using new materials.
- Make the changes necessary to improve the operational carbon footprint of an old building, before building new.
- Is there an existing building or Brownfield site that suits your needs?
- Can you adapt a building or site with minimal change?
- Design for disassembly (Dfd) and eventual reuse to offset future carbon use



The School of Architecture at Waterloo is a reused factory on a remediated Brownfield site.



All of the wood cladding at the YMCA Environmental Learning Center, Paradise Lake, Ontario was salvaged from the demolition of an existing building.

# Materials and Resources, other opportunities

## MR Credit 1

People, "Use" +  
Transportation

MR 1.1 **Building Reuse:** Maintain 75% of Existing Walls, Floors, and Roof  
MR1.2 **Building Reuse:** Maintain 95% of Existing Walls, Floors, and Roof  
MR1.3 **Building Reuse:** Maintain 50% of Interior Non-Structural Elements

Embodied  
Carbon in  
Building  
Materials

- Reuse **SIGNIFICANT** building elements in order to reduce the need for extraction and processing of new materials
- This saves a significant amount of embodied carbon
- This also saves associated transportation energy as all of this material does not need to be transported to the building site (again)

# Materials and Resources, other opportunities

## MR Credit 3

**MR Credit 3.1 Resource Reuse 5%**

**MR Credit 3.2 Resource Reuse 10%**

Embodied  
Carbon in  
Building  
Materials

- Reuse materials in order to reduce the need for extraction and processing of new materials
- This is very helpful in the reuse of demolished structures
- Structural steel can be easily reused
- Wood can be reused for flooring

# Indoor Environmental Quality, 15 of 15 possible points: EQ Prerequisite 2

EQ Prerequisite 1, Minimum IAQ Performance

**EQ Prerequisite 2, Environmental Tobacco Smoke (ETS) Control**

EQ Credit 1, Carbon Dioxide (CO2) Monitoring

EQ Credit 2, Increase Ventilation Effectiveness

EQ Credit 3.1, Construction IAQ Management Plan, During Construction

EQ Credit 3.2, Construction IAQ Management Plan, Before Occupancy

EQ Credit 4.1, Low-Emitting Materials, Adhesives & Sealants

EQ Credit 4.2, Low-Emitting Materials, Paints

EQ Credit 4.3, Low-Emitting Materials, Carpet

EQ Credit 4.4, Low-Emitting Materials, Composite Wood

EQ Credit 5, Indoor Chemical & Pollutant Source Control

EQ Credit 6.1, Controllability of Systems, Perimeter

EQ Credit 6.2, Controllability of Systems, Non-Perimeter

EQ Credit 7.1, Thermal Comfort, Comply with ASHRAE 55-1992

EQ Credit 7.2, Thermal Comfort, Permanent Monitoring System

EQ Credit 8.1, Daylight & Views, Daylight 75% of Spaces

EQ Credit 8.2, Daylight & Views, Views for 90% of Spaces

COMMON  
SENSE

This requirement presents a huge impediment in Foreign countries.



# Indoor Environmental Quality, 15 of 15 possible points: EQ Credit 8

EQ Prerequisite 1, Minimum IAQ Performance

EQ Prerequisite 2, Environmental Tobacco Smoke (ETS) Control

EQ Credit 1, Carbon Dioxide (CO<sub>2</sub>) Monitoring

EQ Credit 2, Increase Ventilation Effectiveness

EQ Credit 3.1, Construction IAQ Management Plan, During Construction

EQ Credit 3.2, Construction IAQ Management Plan, Before Occupancy

EQ Credit 4.1, Low-Emitting Materials, Adhesives & Sealants

EQ Credit 4.2, Low-Emitting Materials, Paints

EQ Credit 4.3, Low-Emitting Materials, Carpet

EQ Credit 4.4, Low-Emitting Materials, Composite Wood

EQ Credit 5, Indoor Chemical & Pollutant Source Control

EQ Credit 6.1, Controllability of Systems, Perimeter


EQ Credit 6.2, Controllability of Systems, Non-Perimeter

EQ Credit 7.1, Thermal Comfort, Comply with ASHRAE 55-1992

EQ Credit 7.2, Thermal Comfort, Permanent Monitoring System

**EQ Credit 8.1, Daylight & Views, Daylight 75% of Spaces**

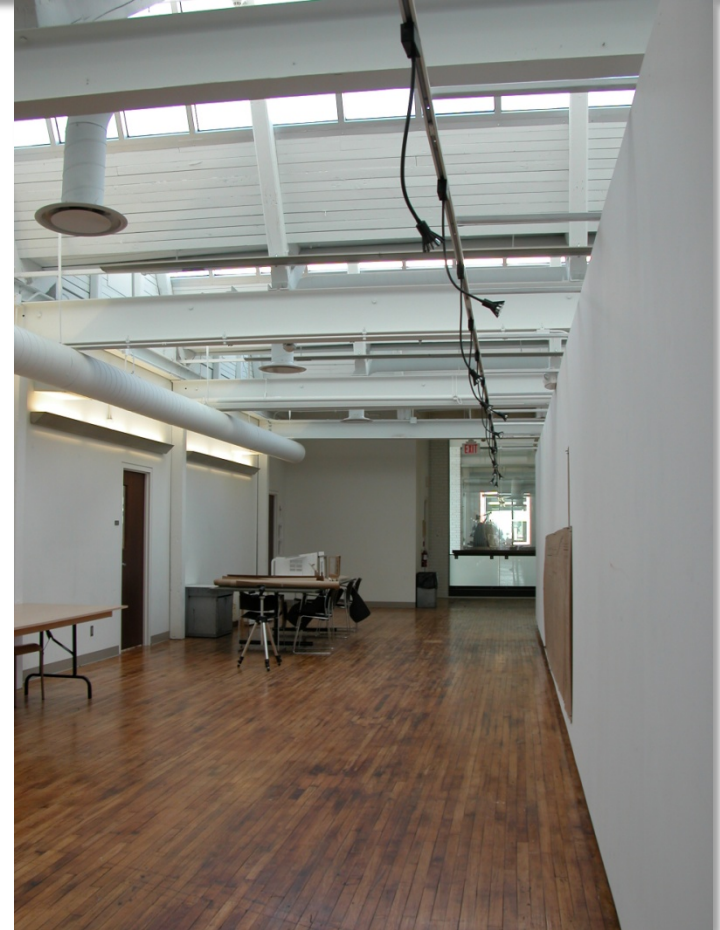
**EQ Credit 8.2, Daylight & Views, Views for 90% of Spaces**



Operating  
energy

## Passive Lighting Strategies:

- use energy efficient light fixtures (and effectively!)
- use occupant sensors combined with light level sensors
- aim to only have lights switch on only when daylight is insufficient
- provide electricity via renewable means: wind, PV, CHP



Lights on due to occupant sensors when there is adequate daylight – WASTES ENERGY!

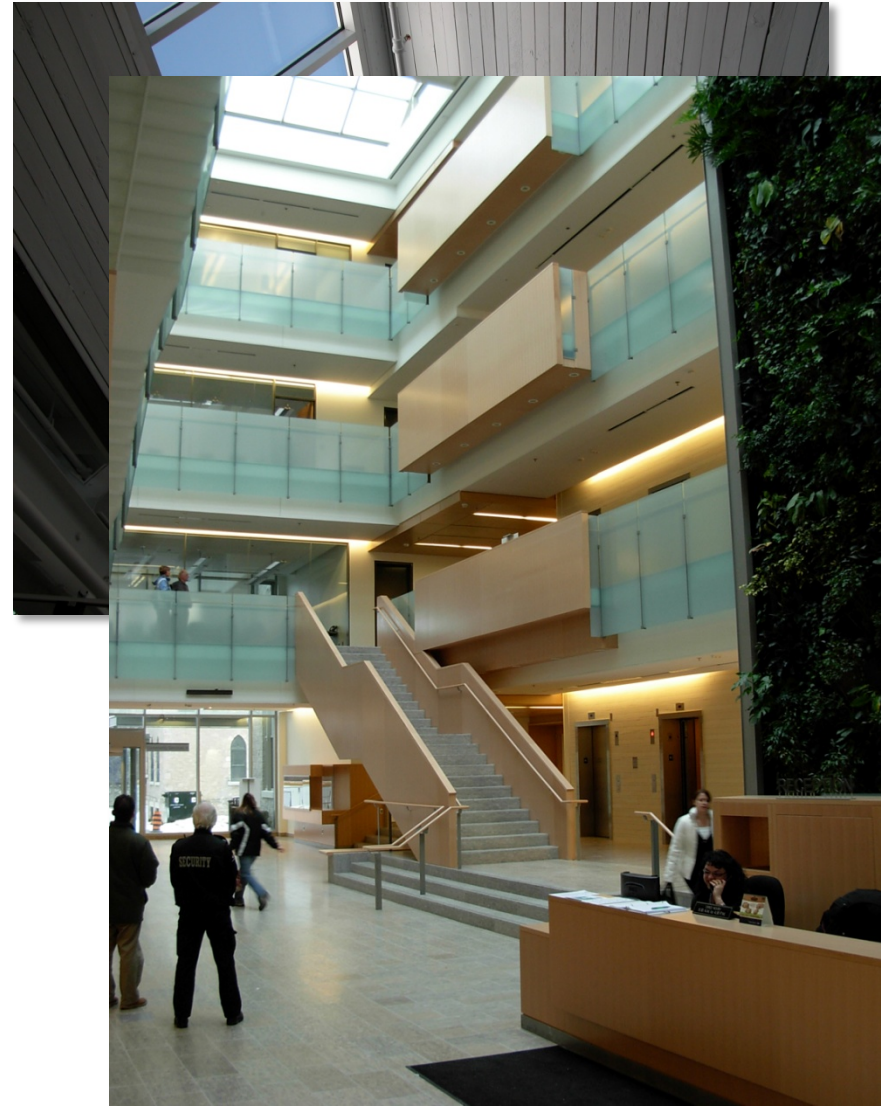
# Passive Lighting Strategies:

## Orientation and building planning

- start with solar geometry
- understand context, sky dome, adjacent buildings and potential overshadowing
- be able to differentiate between sunlight (heat) and daylight (seeing)
- understand occupancy/use requirements
- maximize areas served by daylight
- explore different glazing strategies: side, clerestory, top
- consider light shelves and reflected light

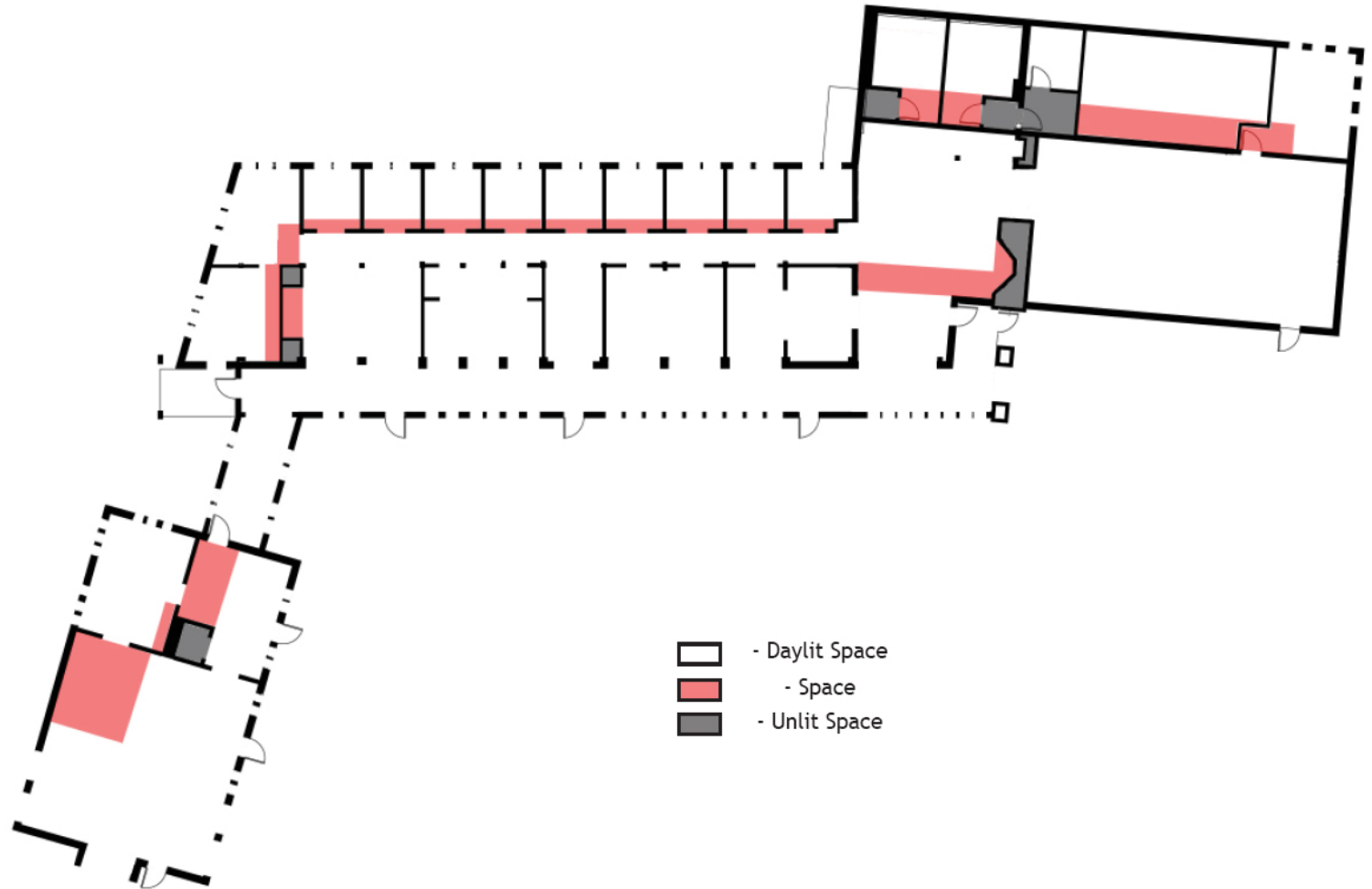
# Passive Lighting Strategies: Glare, color, reflectivity and materials

- incorporate light dynamics
- avoid glare
- understand the function of material selection; ie. reflectivity and surface qualities
- balance color and reflectivity with amount of daylight provided



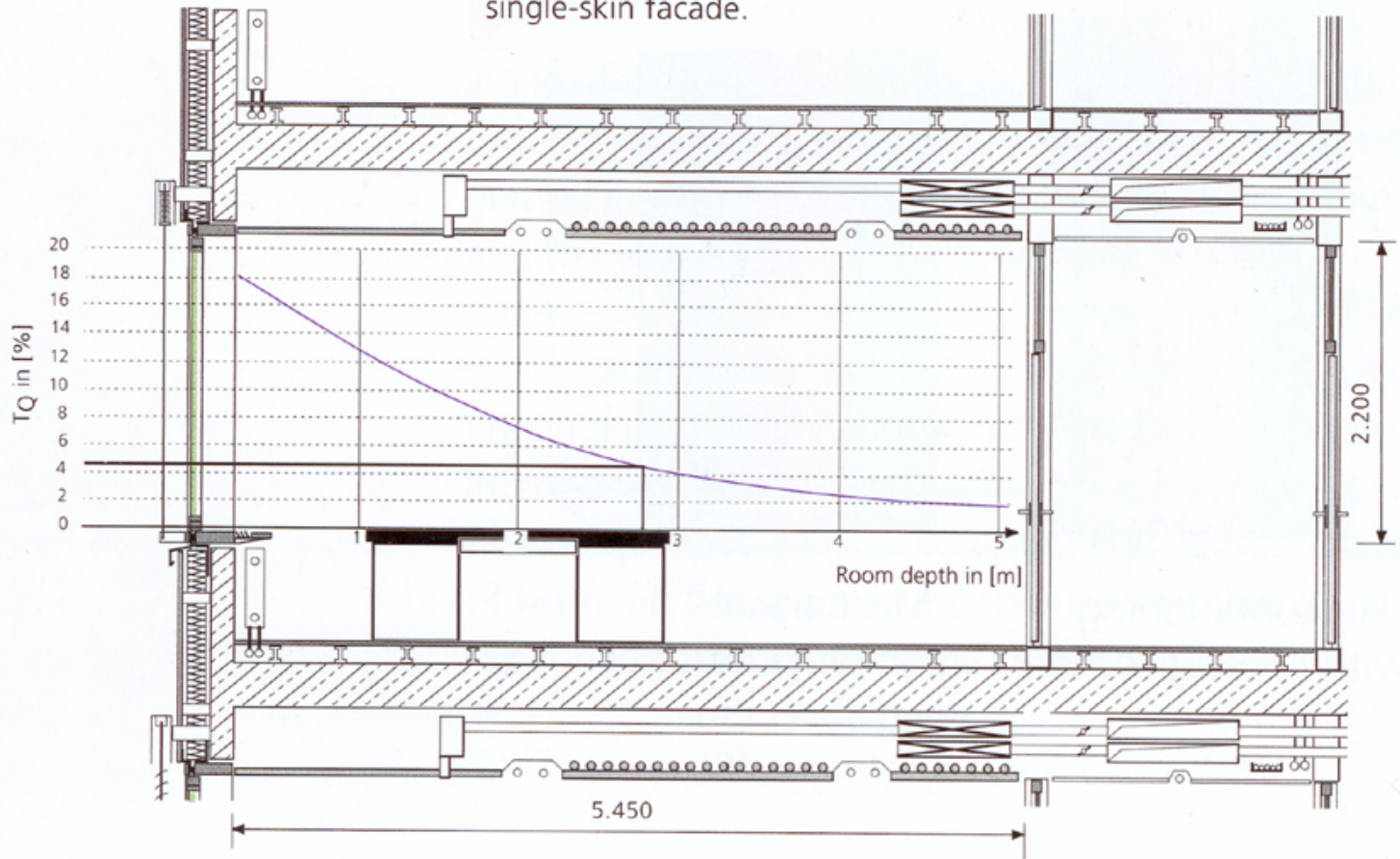


# Daylight All Occupied Zones

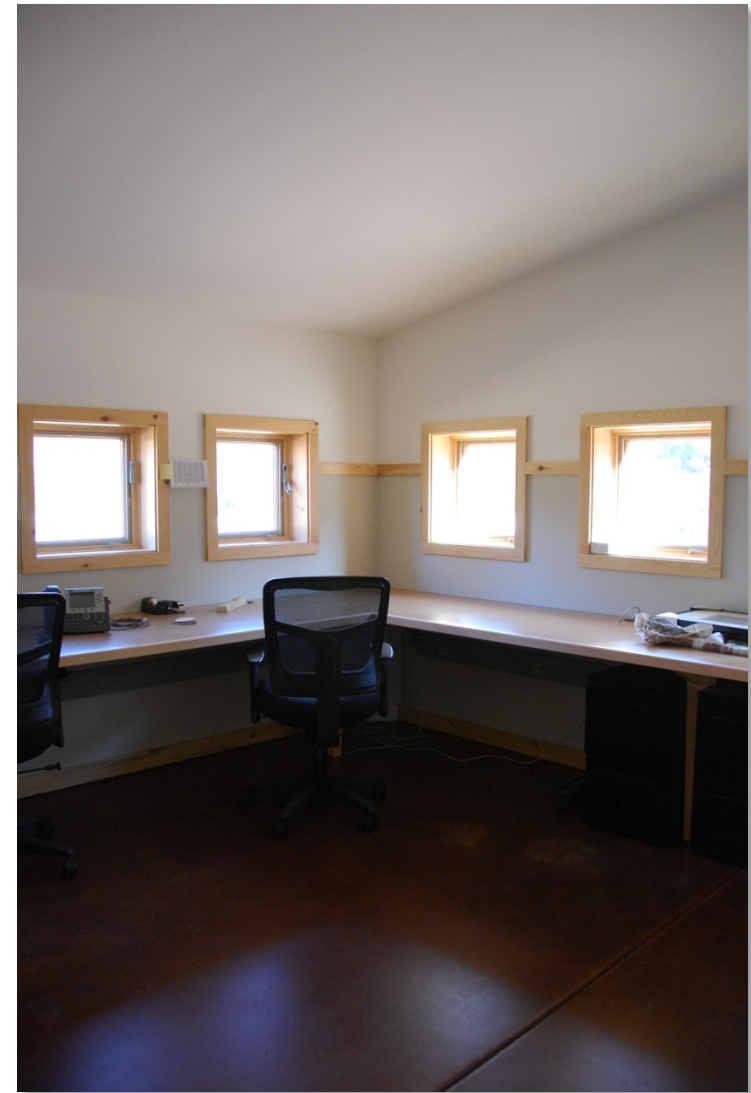


Electric lights are only ON when there is insufficient daylight. You need a THIN plan to make this work. Depth from window cannot exceed 5 m.

6-1 Daylight-factor curve over the depth of a room with a single-skin facade.



- Amount of light determined by height of room, window design, head height, sill height + colour of surfaces and presence of furniture
- LEED daylight credit requires a minimum Daylight Factor of 2%



Watch out for finish colours. The natural colour of the wood made the left hand space more difficult to light naturally.



# Innovation and Design Process, 5 of 5 possible points

ID Credit 1.1, Innovation in Design "Exemplary Performance, EAc6"

ID Credit 1.2, Innovation in Design "Exemplary Performance, EAc2"

ID Credit 1.3, Innovation in Design "Carbon Neutral Building Operation"

ID Credit 1.4, Innovation in Design "Exemplary Performance, MRc5.1"

ID Credit 2, LEED® Accredited Professional

Achieving carbon neutrality will pretty well guarantee ID credits for excesses in other categories.

